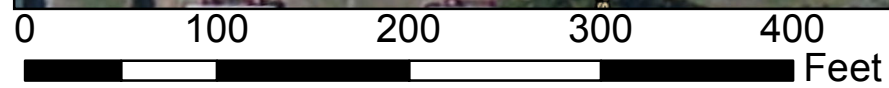
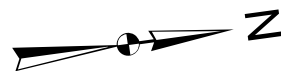





Esri, HERE, DeLorme, MapmyIndia, © OpenStreetMap contributors, Esri, HERE, community, Source: Esri, DigitalGlobe, GeoEye, Earthstar Geographics, CNES/



● 2-36 Approximate location of soil boring




 Amec Foster Wheeler Environment & Infrastructure, Inc. 4000 Meadow Lake Drive, Suite 125 Birmingham, Alabama 35242 (205) 980-6402	DRAWN / CHECKED EDP / MMA	FIGURE B-1: Boring Location Map (Sheet 1 of 7)	Alabama Department of Transportation Broad St. & Beauregard St. from Canal St. to I-10 Phase III Mobile, Mobile County ALDOT Project No.: ST-049-999-013
	REVISED 10-4-2017	PROJECT NUMBER 7630-17-1449	

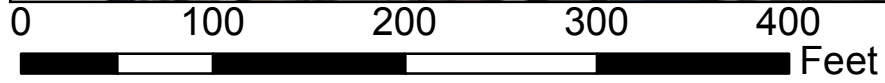


0 100 200 300 400 Feet

● 3-6 Approximate location of soil boring




 Amec Foster Wheeler Environment & Infrastructure, Inc. 4000 Meadow Lake Drive, Suite 125 Birmingham, Alabama 35242 (205) 980-6402	DRAWN / CHECKED EDP / MMA	FIGURE B-1: Boring Location Map (Sheet 2 of 7)	Alabama Department of Transportation Broad St. & Beauregard St. from Canal St. to I-10 Phase III Mobile, Mobile County ALDOT Project No.: ST-049-999-013
	REVISED 10-4-2017	PROJECT NUMBER 7630-17-1449	



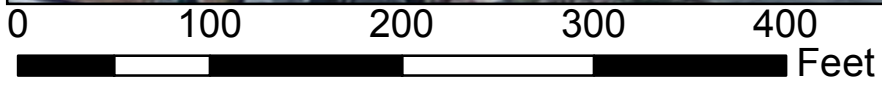
● 3-20 Approximate location of soil boring



 Amec Foster Wheeler Environment & Infrastructure, Inc. 4000 Meadow Lake Drive, Suite 125 Birmingham, Alabama 35242 (205) 980-6402	DRAWN / CHECKED EDP / MMA	FIGURE B-1: Boring Location Map (Sheet 3 of 7)	Alabama Department of Transportation Broad St. & Beauregard St. from Canal St. to I-10 Phase III Mobile, Mobile County ALDOT Project No.: ST-049-999-013
	REVISED 10-4-2017	PROJECT NUMBER 7630-17-1449	




Esri, HERE, DeLorme, MapmyIndia, © OpenStreetMap contributors, Esri, HERE, community, Source: Esri, DigitalGlobe, GeoEye, Earthstar Geographics, CNES/



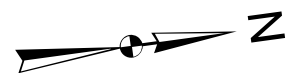
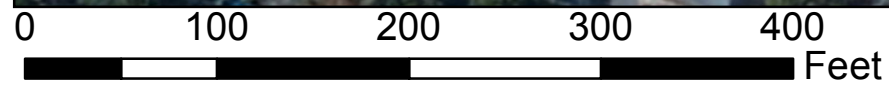
● 3-26 Approximate location of soil boring




 Amec Foster Wheeler Environment & Infrastructure, Inc. 4000 Meadow Lake Drive, Suite 125 Birmingham, Alabama 35242 (205) 980-6402	DRAWN / CHECKED EDP / MMA	FIGURE B-1: Boring Location Map (Sheet 4 of 7)	Alabama Department of Transportation Broad St. & Beauregard St. from Canal St. to I-10 Phase III Mobile, Mobile County ALDOT Project No.: ST-049-999-013
	REVISED 10-4-2017	PROJECT NUMBER 7630-17-1449	



Esri, HERE, DeLorme, MapmyIndia, © OpenStreetMap contributors, Esri, HERE, community, Source: Esri, DigitalGlobe, GeoEye, Earthstar Geographics, CNES/

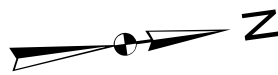
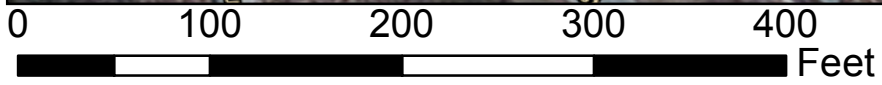


● 3-36 Approximate location of soil boring


 Amec Foster Wheeler Environment & Infrastructure, Inc. 4000 Meadow Lake Drive, Suite 125 Birmingham, Alabama 35242 (205) 980-6402	DRAWN / CHECKED EDP / MMA	FIGURE B-1: Boring Location Map (Sheet 5 of 7)	Alabama Department of Transportation Broad St. & Beauregard St. from Canal St. to I-10 Phase III Mobile, Mobile County ALDOT Project No.: ST-049-999-013
	REVISED 10-4-2017	PROJECT NUMBER 7630-17-1449	



Esri, HERE, DeLorme, MapmyIndia, © OpenStreetMap contributors, Esri, HERE, community, Source: Esri, DigitalGlobe, GeoEye, Earthstar Geographics, CNES/



● 3-45 Approximate location of soil boring

 Amec Foster Wheeler Environment & Infrastructure, Inc. 4000 Meadow Lake Drive, Suite 125 Birmingham, Alabama 35242 (205) 980-6402	DRAWN / CHECKED EDP / MMA	FIGURE B-1: Boring Location Map (Sheet 6 of 7)	Alabama Department of Transportation Broad St. & Beauregard St. from Canal St. to I-10 Phase III Mobile, Mobile County ALDOT Project No.: ST-049-999-013
	REVISED 10-4-2017	PROJECT NUMBER 7630-17-1449	




0 100 200 300 400 Feet

● 3-50 Approximate location of soil boring



Esri, HERE, DeLorme, MapmyIndia, © OpenStreetMap contributors, Esri, HERE, community, Source: Esri, DigitalGlobe, GeoEye, Earthstar Geographics, CNES/

 Amec Foster Wheeler Environment & Infrastructure, Inc. 4000 Meadow Lake Drive, Suite 125 Birmingham, Alabama 35242 (205) 980-6402	DRAWN / CHECKED EDP / MMA	FIGURE B-1: Boring Location Map (Sheet 7 of 7)	Alabama Department of Transportation Broad St. & Beauregard St. from Canal St. to I-10 Phase III Mobile, Mobile County ALDOT Project No.: ST-049-999-013
	REVISED 10-4-2017	PROJECT NUMBER 7630-17-1449	

NOTES:

THE SUBSURFACE CONDITIONS ENCOUNTERED AT THE BORING LOCATIONS ARE SHOWN ON THE TEST BORING RECORDS. THESE RECORDS REPRESENT OUR INTERPRETATION OF THE SUBSURFACE CONDITIONS BASED ON THE FIELD LOGS AND VISUAL CLASSIFICATION OF FIELD SAMPLES BY A GEOTECHNICAL PROFESSIONAL, AND MAY NOT NECESSARILY REFLECT THE ACTUAL VARIATION IN SUBSURFACE CONDITIONS BETWEEN BORINGS AND SAMPLES. THE LINES DESIGNATING THE INTERFACE BETWEEN VARIOUS STRATA ON THE RECORDS REPRESENT THE APPROXIMATE INTERFACE LOCATION. THE ACTUAL TRANSITION BETWEEN STRATA MAY BE GRADUAL. THE OBSERVED WATER LEVELS AND CONDITIONS INDICATED ON THE BORING LOGS ARE AS RECORDED AT THE TIME OF EXPLORATION. THESE WATER LEVELS AND CONDITIONS MAY VARY CONSIDERABLY WITH TIME ACCORDING TO THE PREVAILING CLIMATE, RAINFALL OR OTHER FACTORS AND ARE OTHERWISE DEPENDENT ON THE DURATION OF AND THE METHODS USED IN THE EXPLORATION PROGRAM. THIS INFORMATION WAS PREPARED AND IS INTENDED FOR STATE DESIGN AND ESTIMATE PURPOSES. ITS PRESENTATION ON THE PLANS OR ELSEWHERE IS FOR THE PURPOSE OF PROVIDING INTENDED USERS WITH ACCESS TO THE SAME INFORMATION AVAILABLE TO THE STATE. THIS SUBSURFACE INFORMATION IS PRESENTED IN GOOD FAITH AND IS NOT INTENDED AS A SUBSTITUTE FOR PERSONAL INVESTIGATION, INDEPENDENT INTERPRETATIONS OR JUDGMENT OF THE CONTRACTOR. THE GEOTECHNICAL REPORT PREPARED BY AMEC FOSTER WHEELER IS AVAILABLE FOR REVIEW AT THE GEOTECHNICAL SECTION OF THE BUREAU OF MATERIALS AND TESTS.

ROCK CORE IS STORED AT THE ALDOT MATERIALS & TESTS ANNEX IN MONTGOMERY

REFERENCE:

CHECKLIST AND GUIDELINES FOR REVIEW OF GEOTECHNICAL REPORTS AND PRELIMINARY PLANS AND SPECIFICATION, FEDERAL HIGHWAY ADMINISTRATION PUBLICATION NO.: FHWA ED-88-053, AUGUST 1988 (REVISED FEBRUARY 2003)

Rock Type Symbol Legend

SYMBOL	ROCK TYPE
	COAL/LIGNITE
	CONGLOMERATE
	GNEISS
	LIMESTONE/DOLOMITE
	QUARTZITE
	SANDSTONE
	SHALE
	SILTSTONE
	VOIDS - FILLED
	VOIDS

Miscellaneous Symbol Legend

	ASPHALT
	CONCRETE
	WATER

Soil Classification Symbol Legend

SYMBOL	USCS	AASHTO
	GW	A-1-a
	GP	A-1-a
	GM	A-1-b
	GC	A-2-6, A-2-7
	SW	A-1-b
	SP	A-3
	SM	A-2-4, A-2-5
	SC	A-2-6, A-2-7
	ML	A-4
	CL	A-6
	MH	A-5
	CH	A-7
	FILL	
	MUCK/PEAT	
	TOPSOIL	

Sample Type and Water Level Symbol Legend

	Dynamic Cone Penetrometer
	No Recovery
	Power Auger without Sampling
	Rock Core Sample
	Split Spoon Sample
	Undisturbed Sample
	Caved Depth
	Water level at time of drilling
	Water level after drilling
	Delayed water level

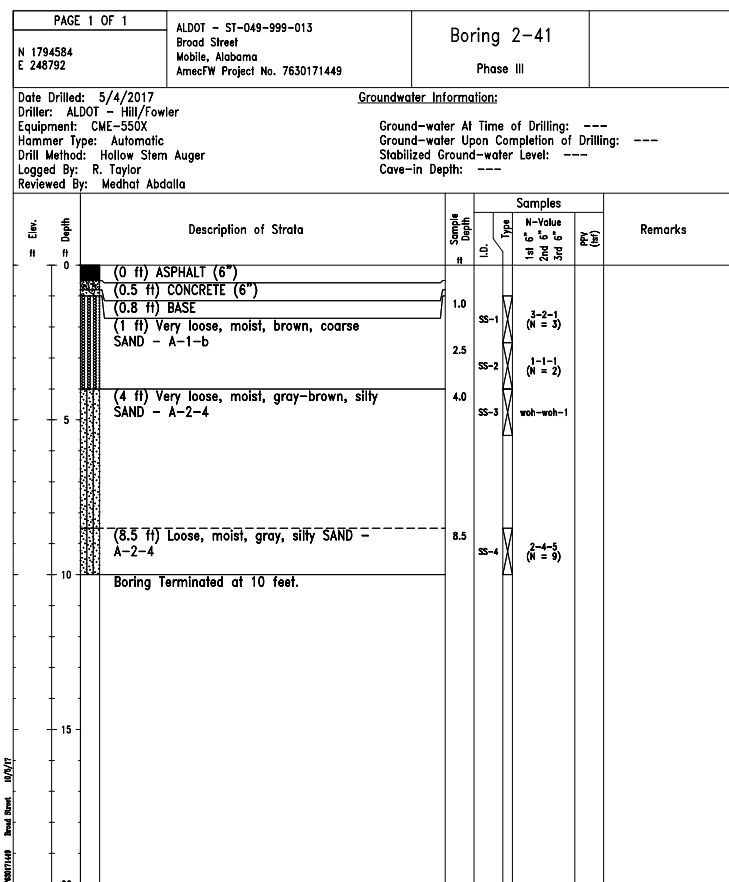
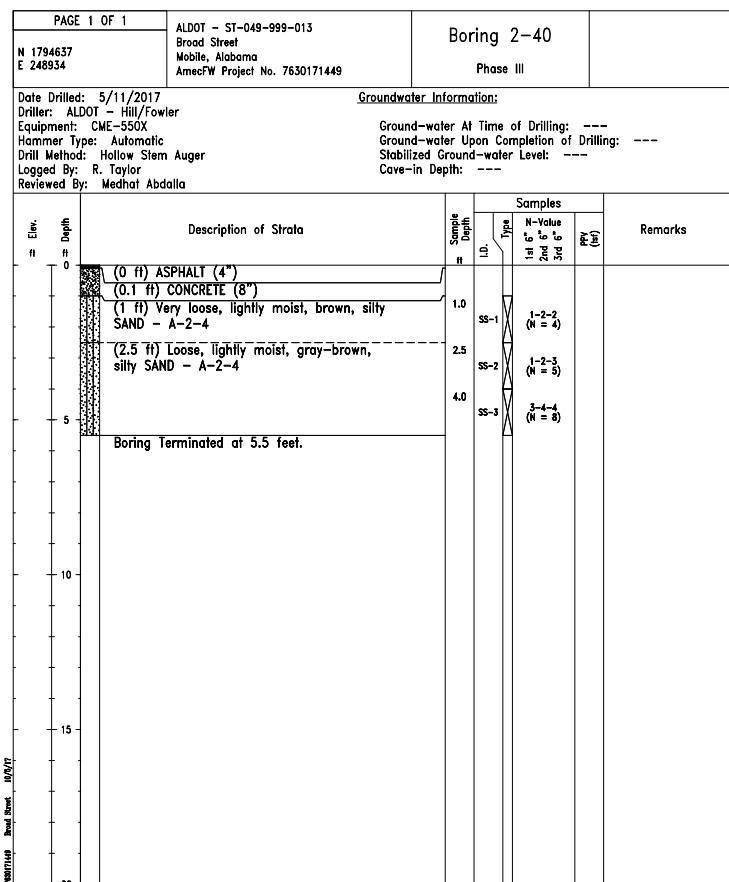
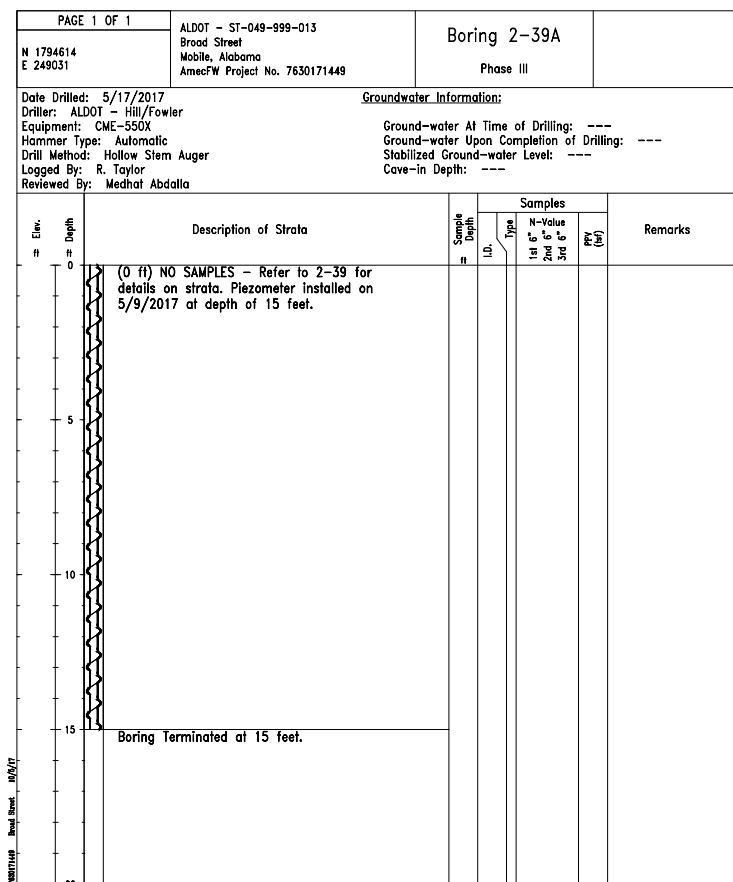
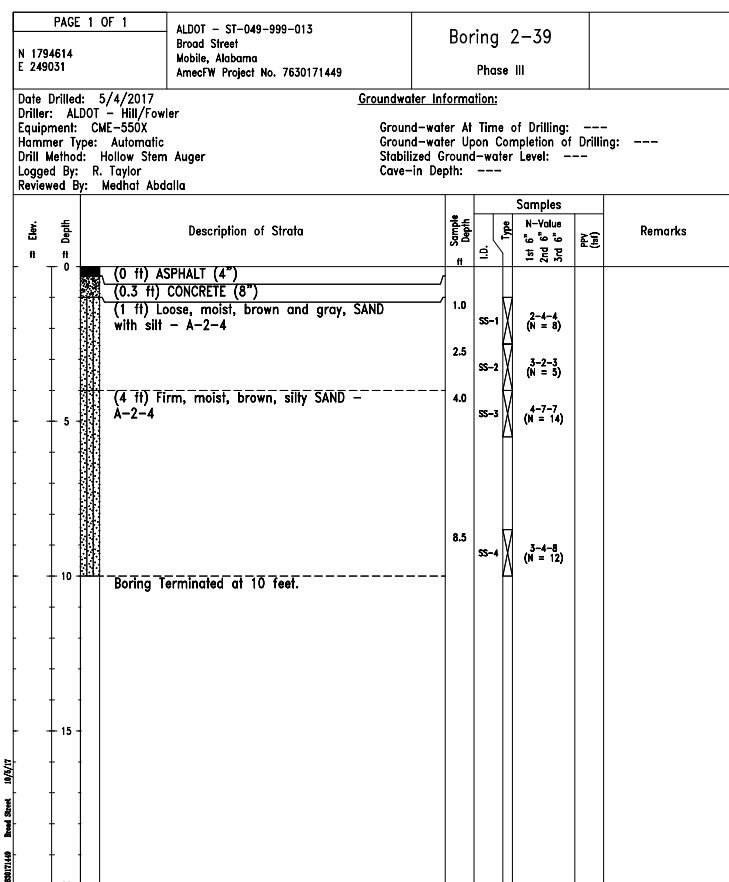
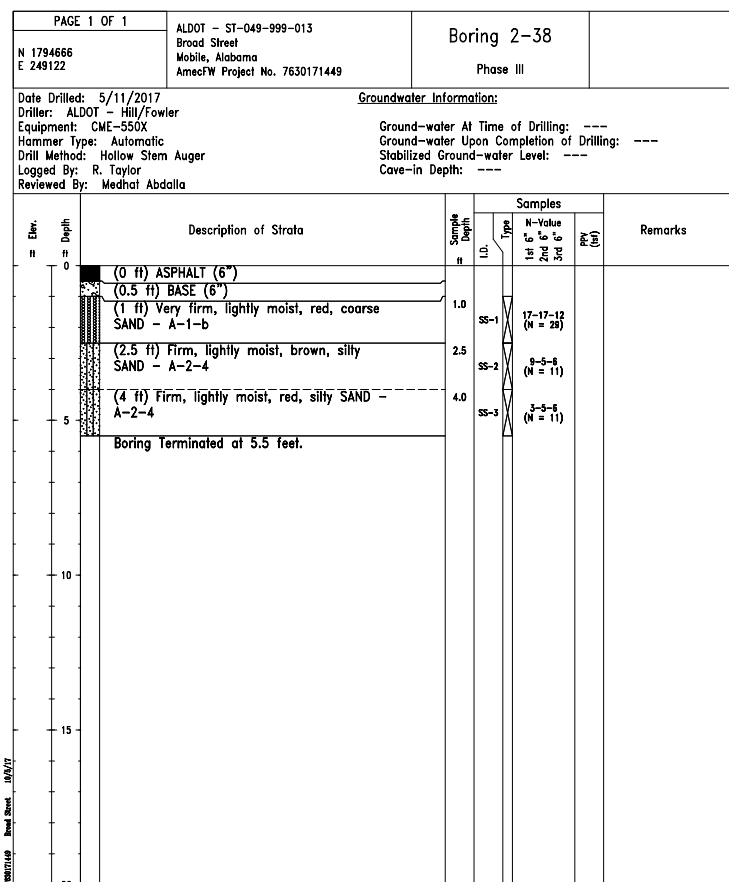
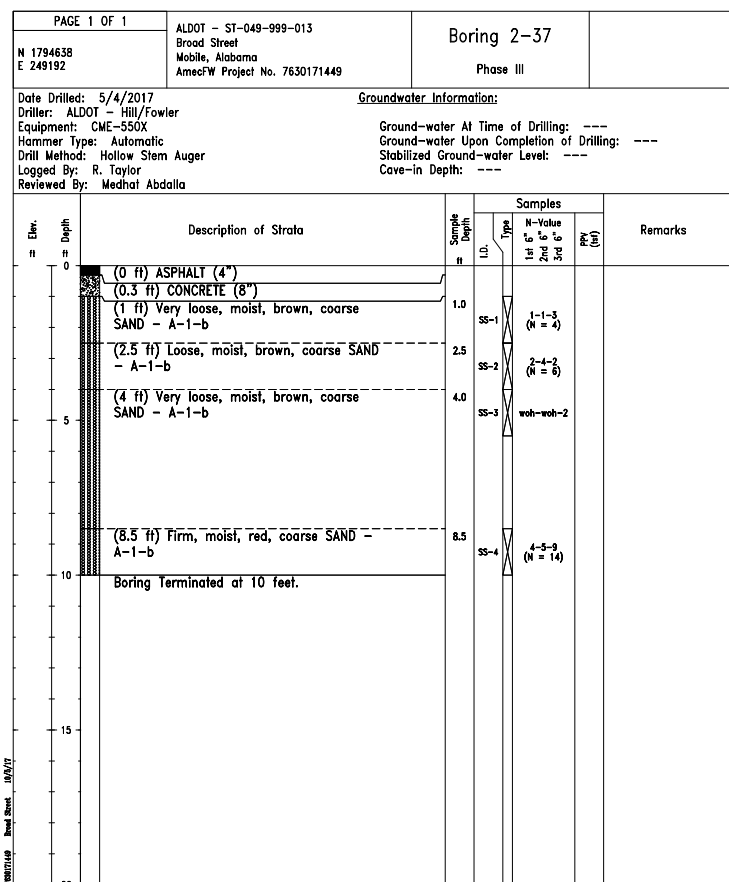
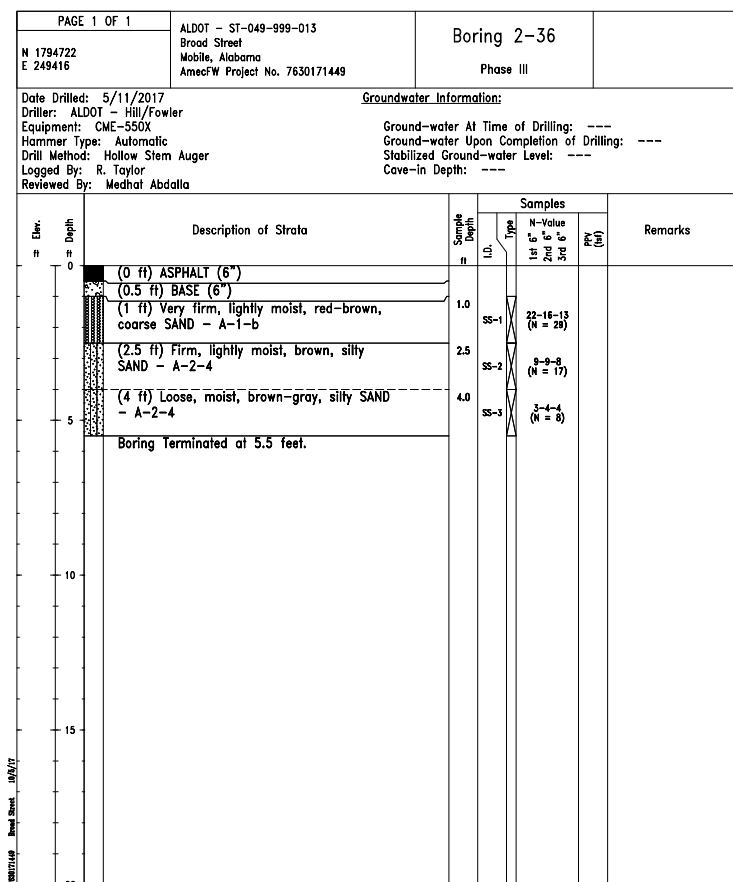
SPT Standard Penetration Test Resistance (blows per foot)


PPV Pocket Penetrometer Value

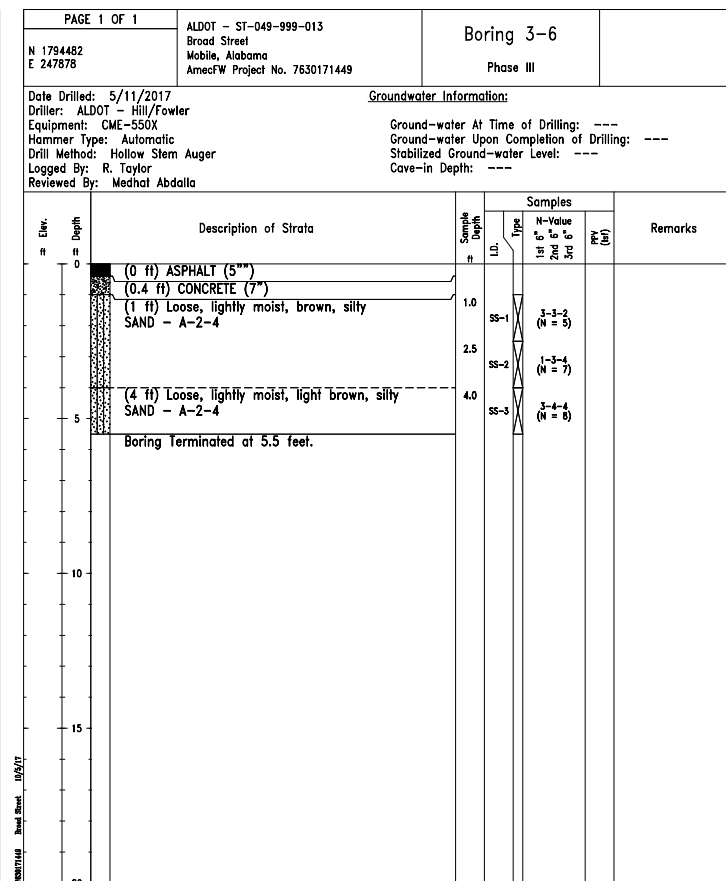
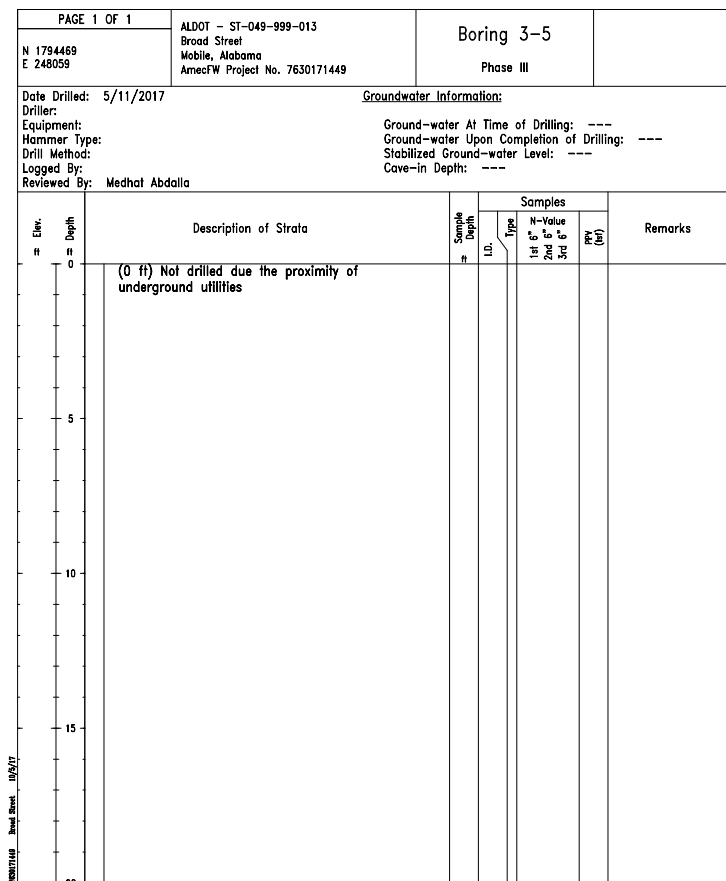
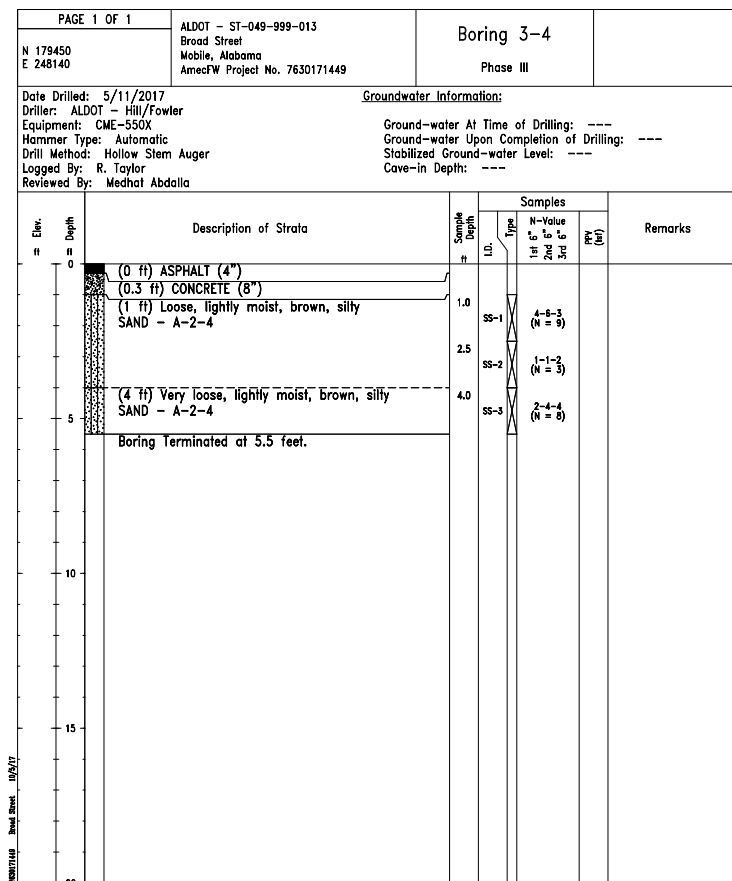
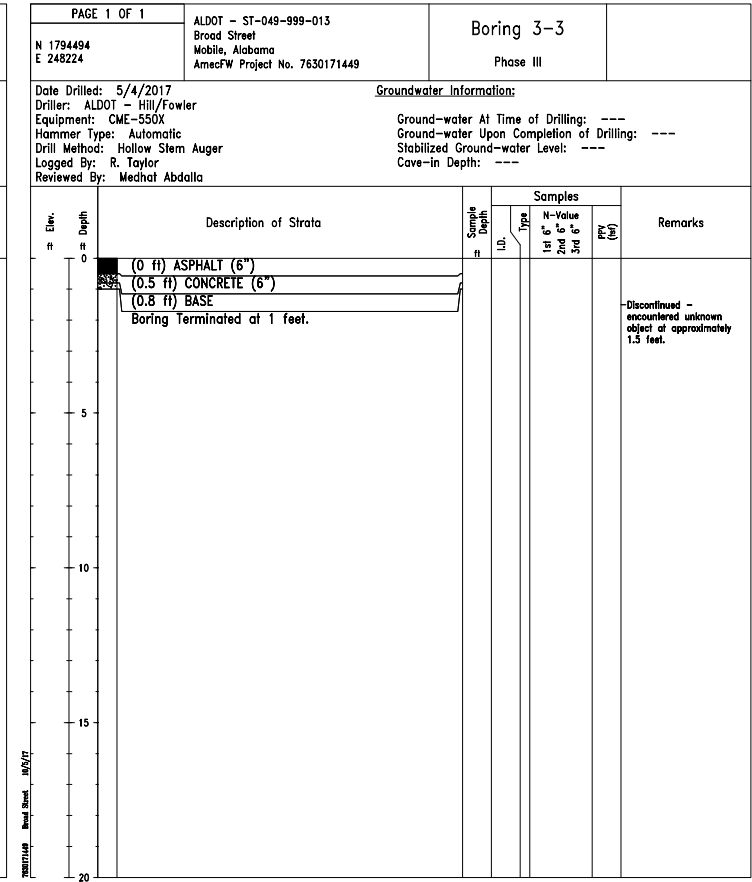
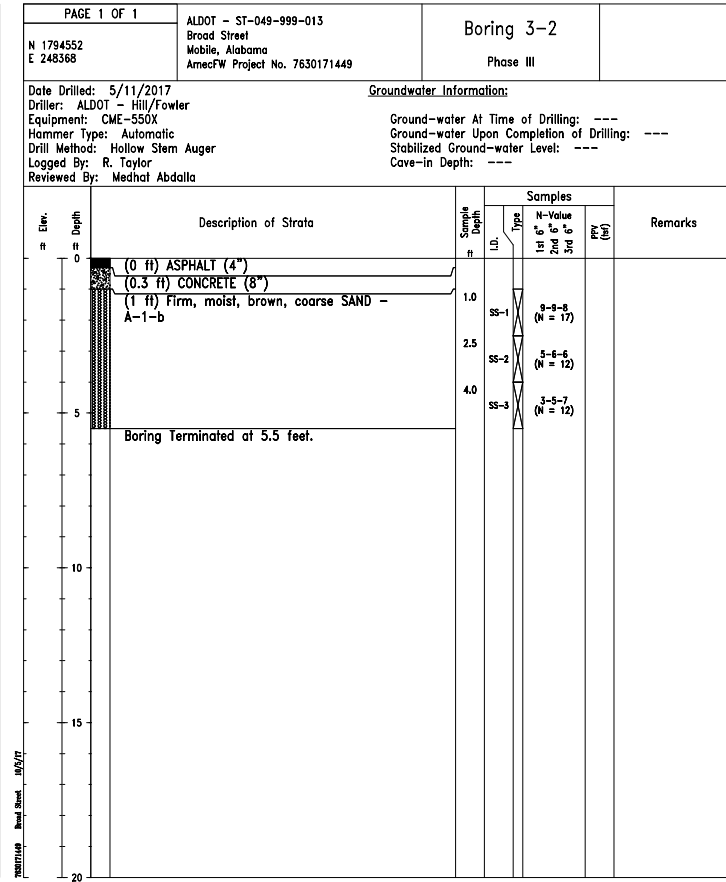
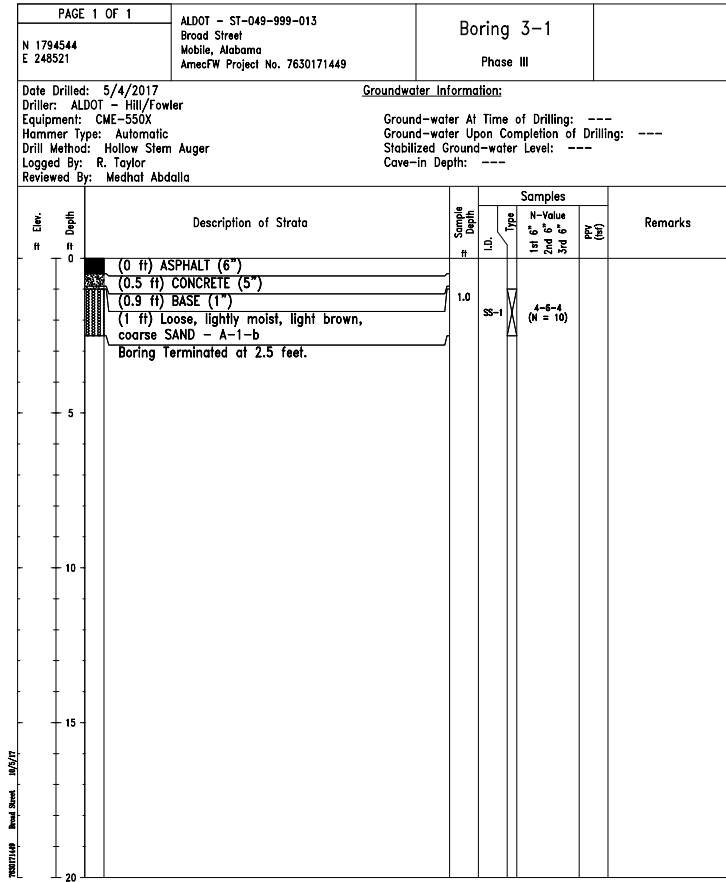
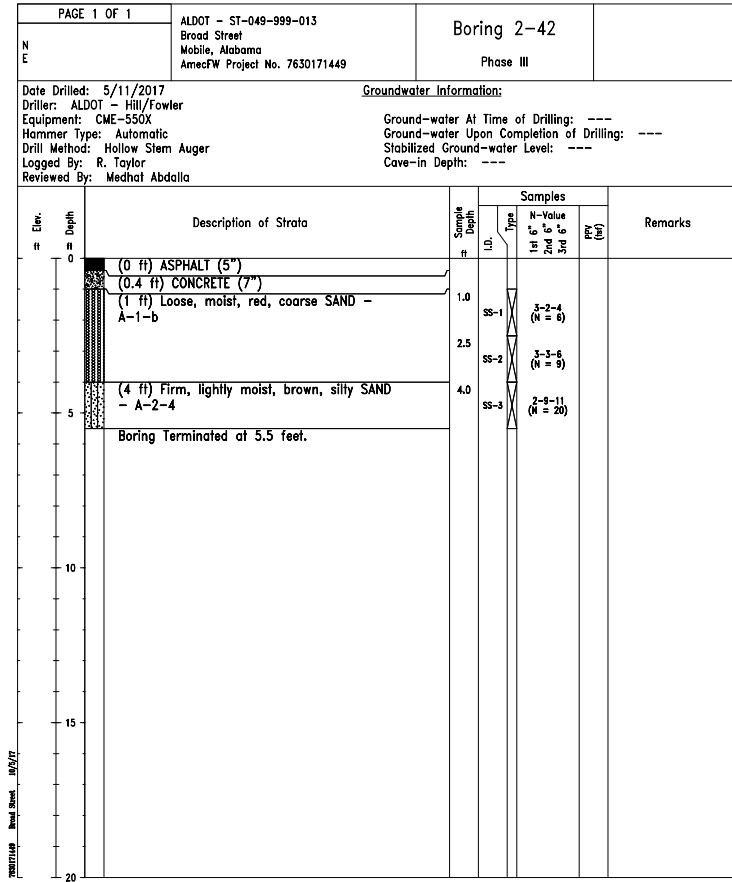
50 Rock Quality Designation
100 Core Recovery %


KEY TO SYMBOLS AND DESCRIPTIONS

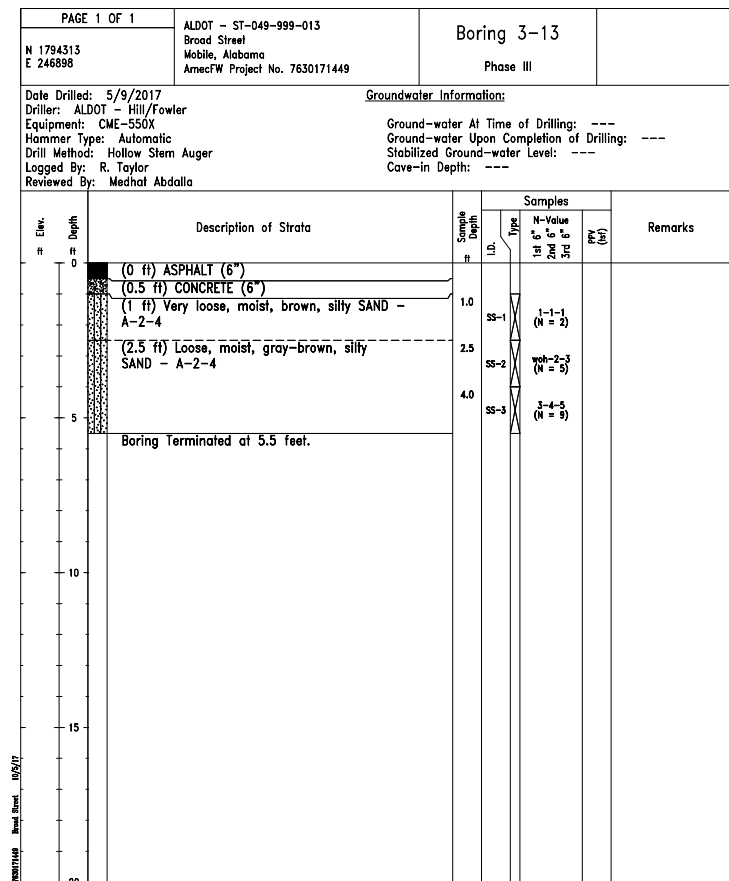
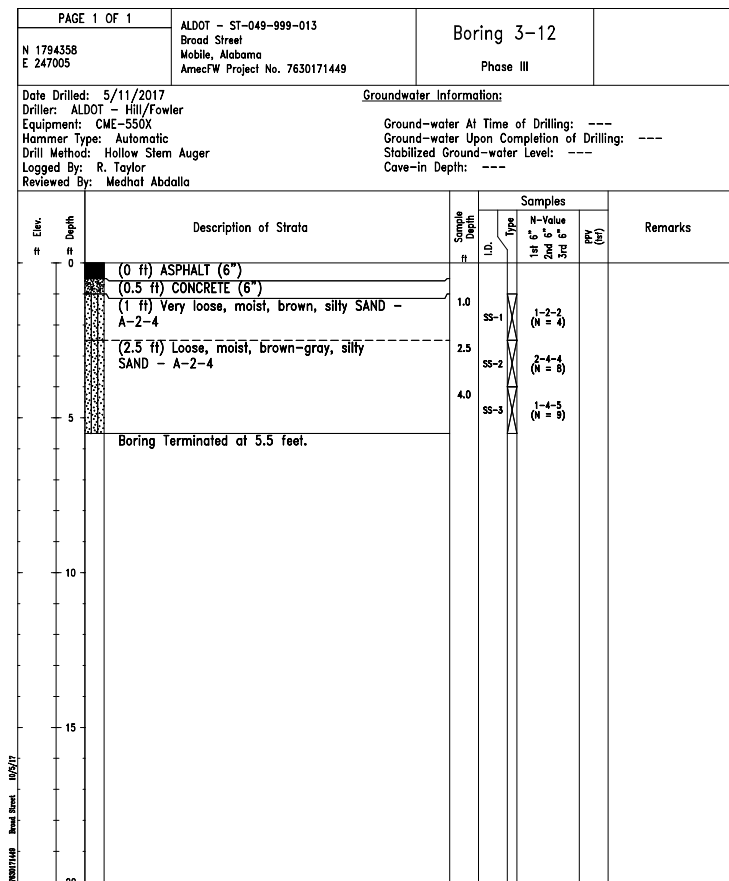
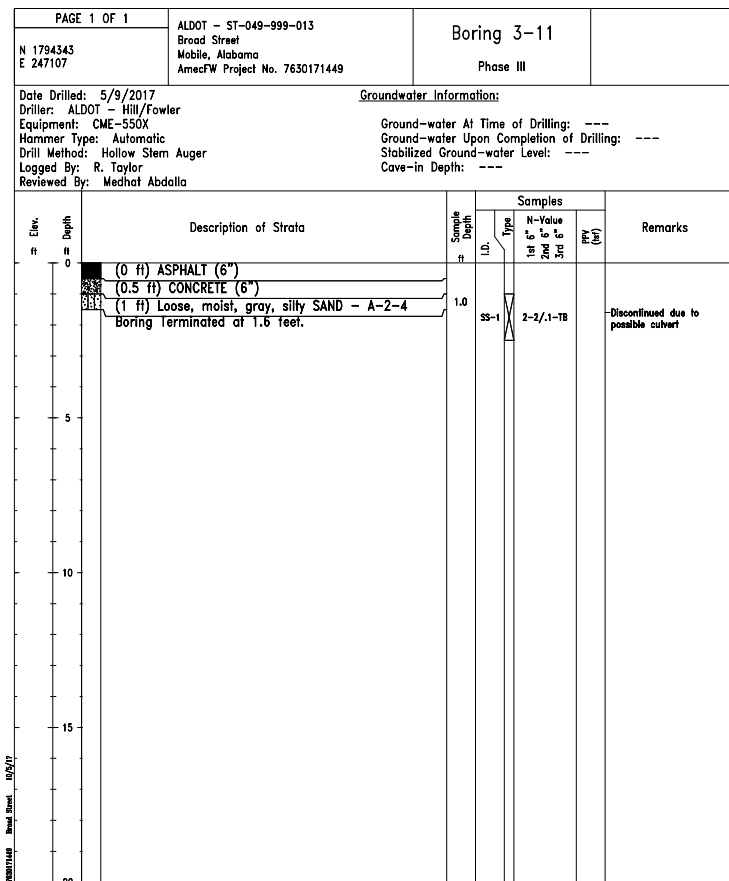
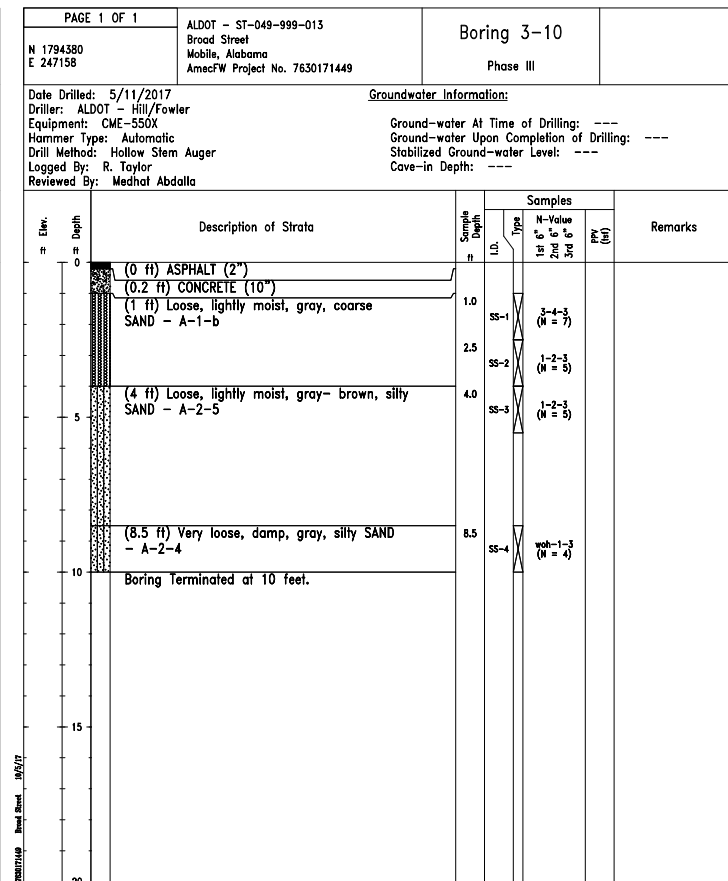
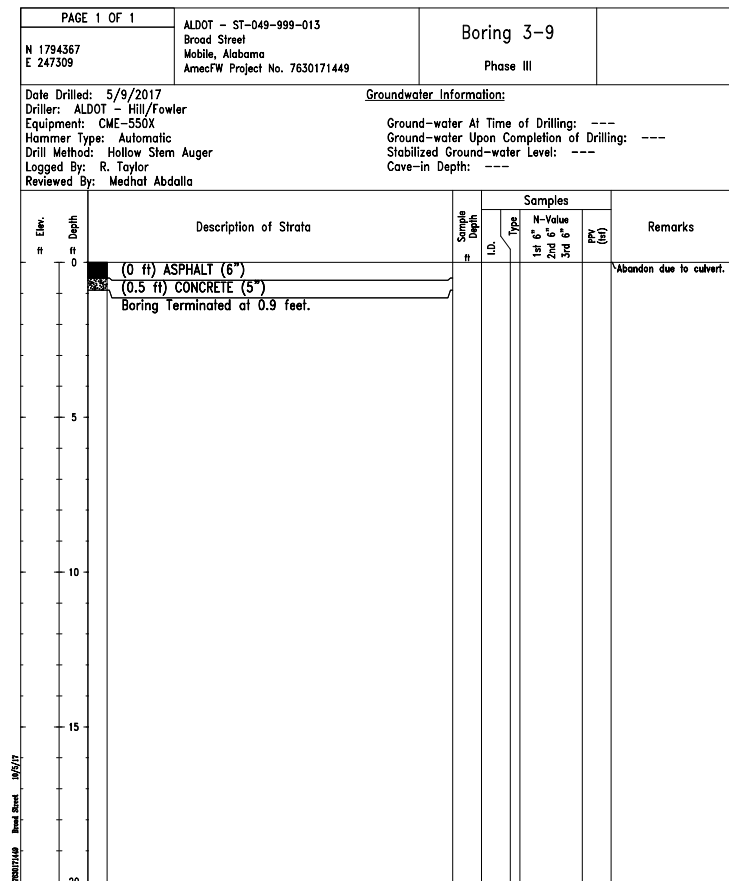
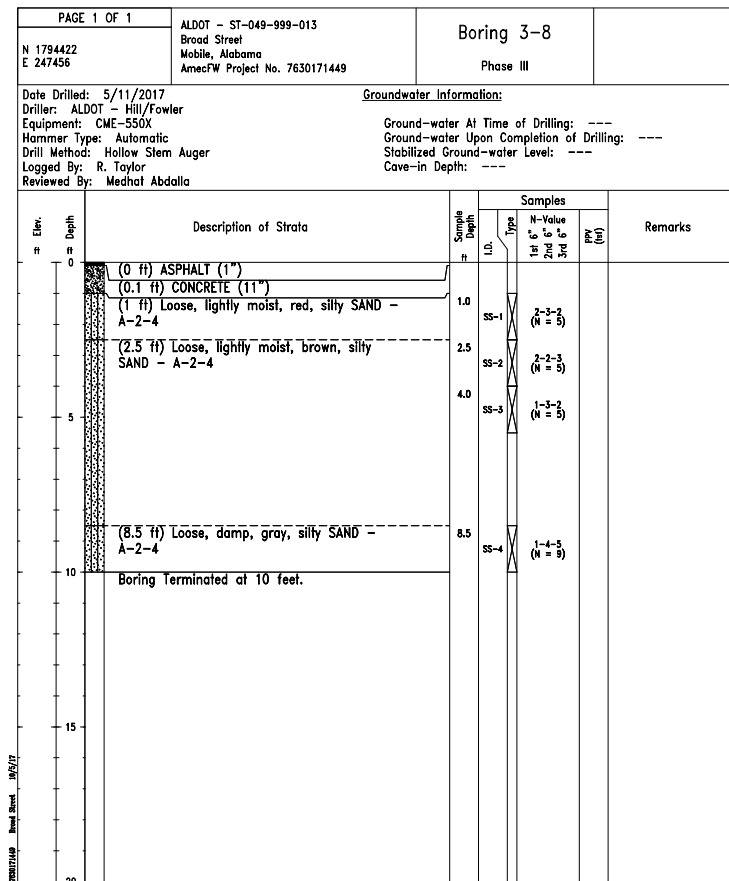
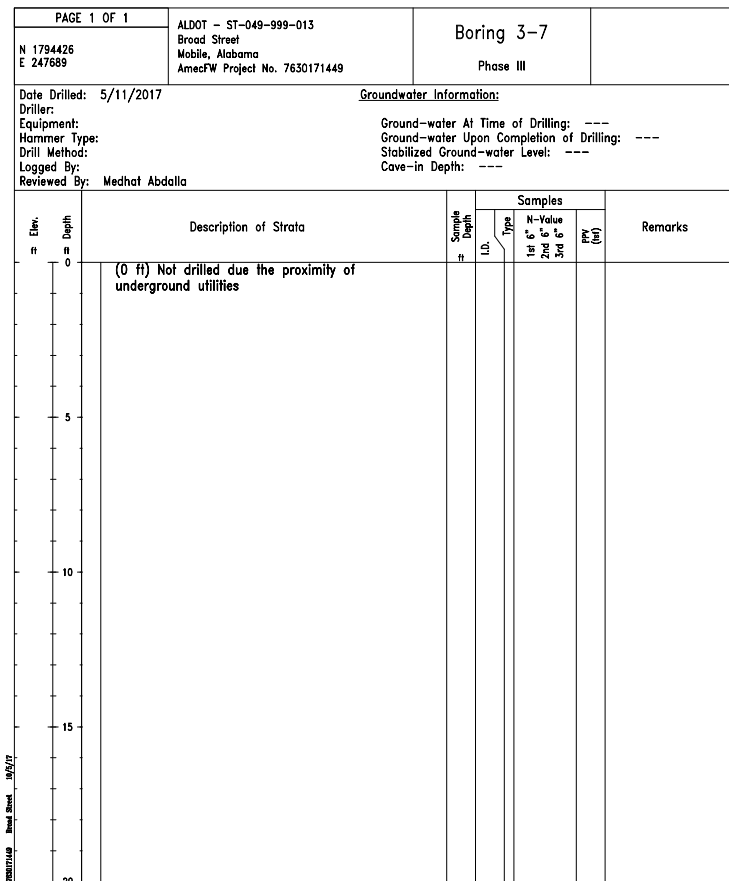
Alabama Department of Transportation	
BRIDGE SHEET ____ OF ____	PROJECT NO.: ST-049-999-013
 Amec Foster Wheeler, Inc. 4000 Meadow Lake Drive, Suite 125 Birmingham, Alabama, 35242	BROAD STREET & BEAUREGARD STREET FROM CANAL STREET TO I-10 PHASE III MOBILE COUNTY MOBILE, ALABAMA
	AMEC FOSTER WHEELER PROJECT NO.: 7630-17-1449 ALDOT PROJECT NO.: ST-049-999-013
APPROVED:	TEST BORING RECORD SHEET 1 OF 10
DATE: _____	




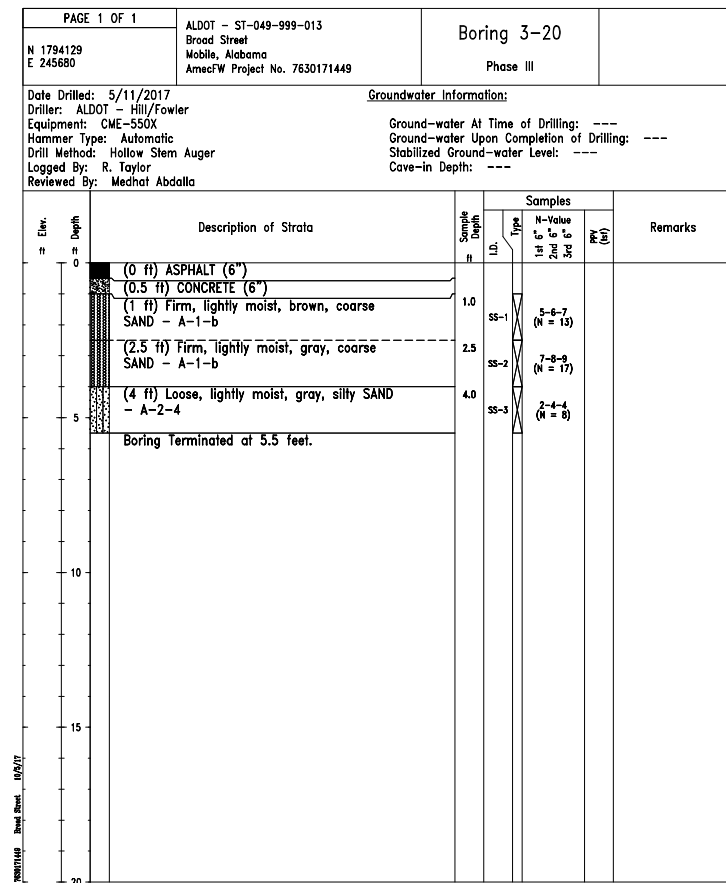
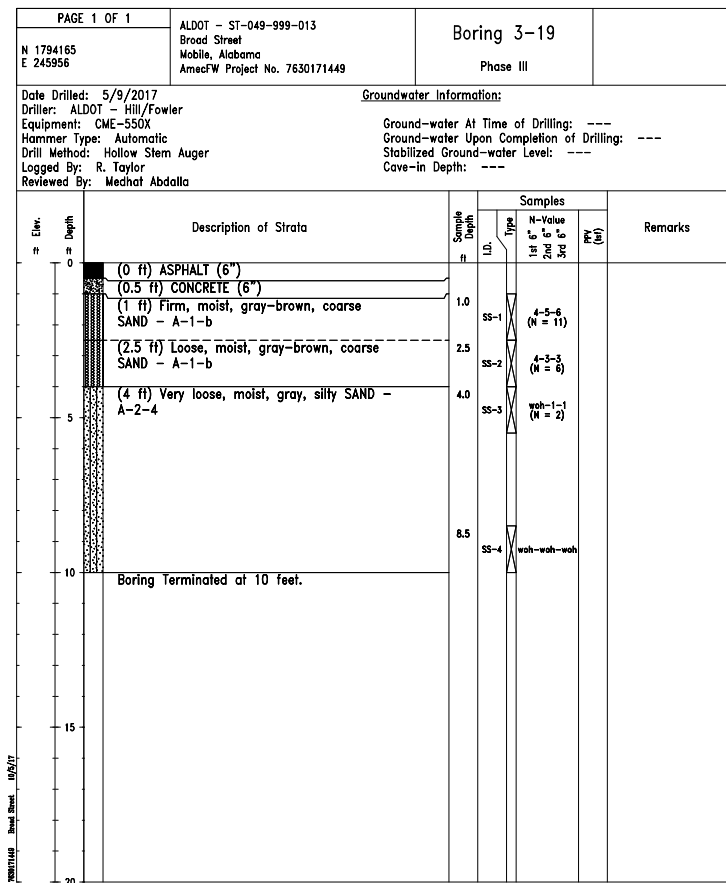
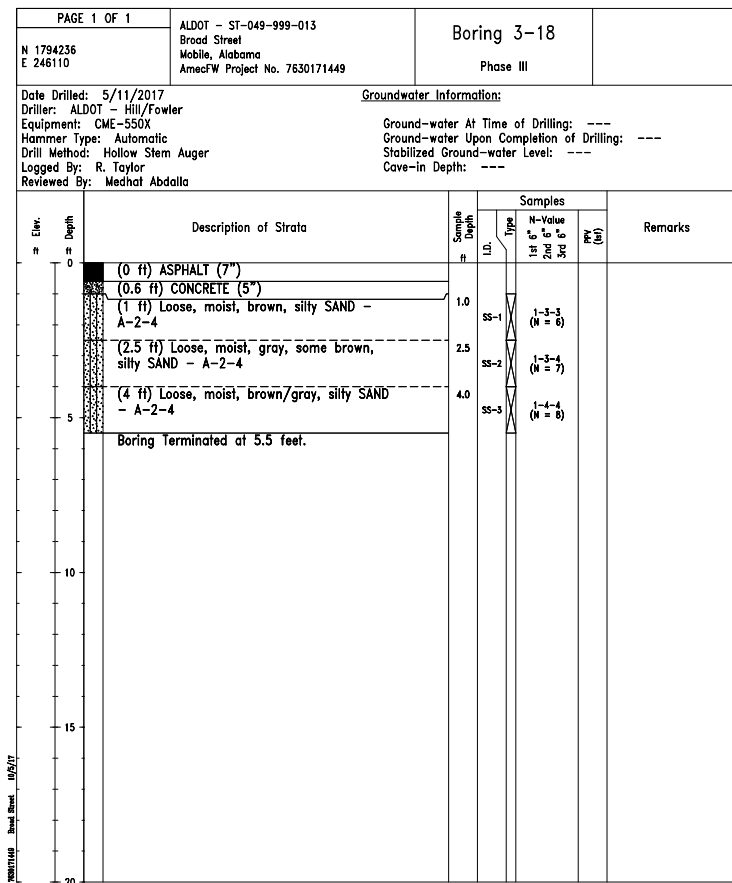
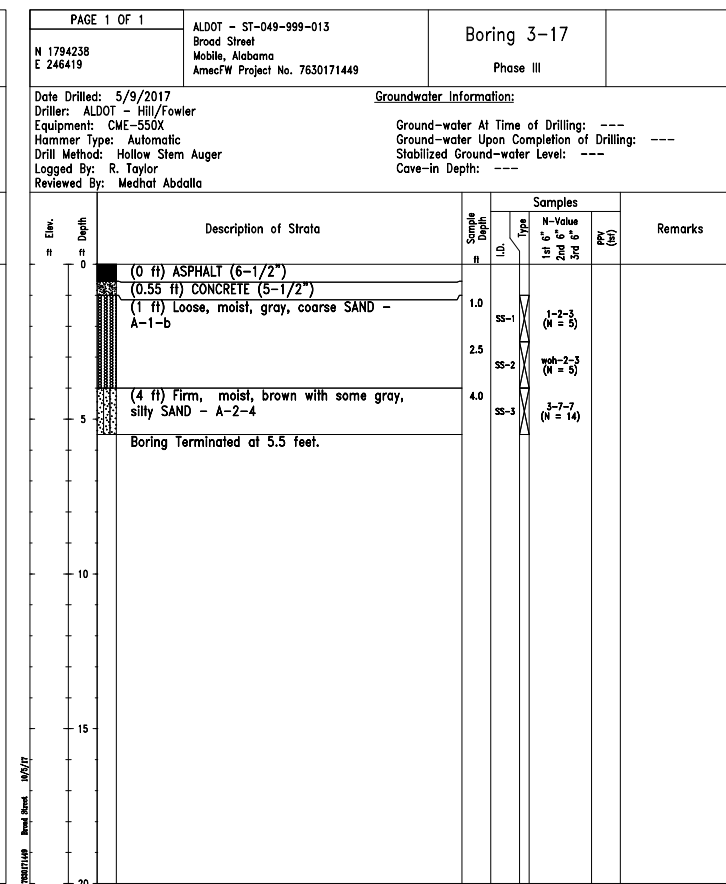
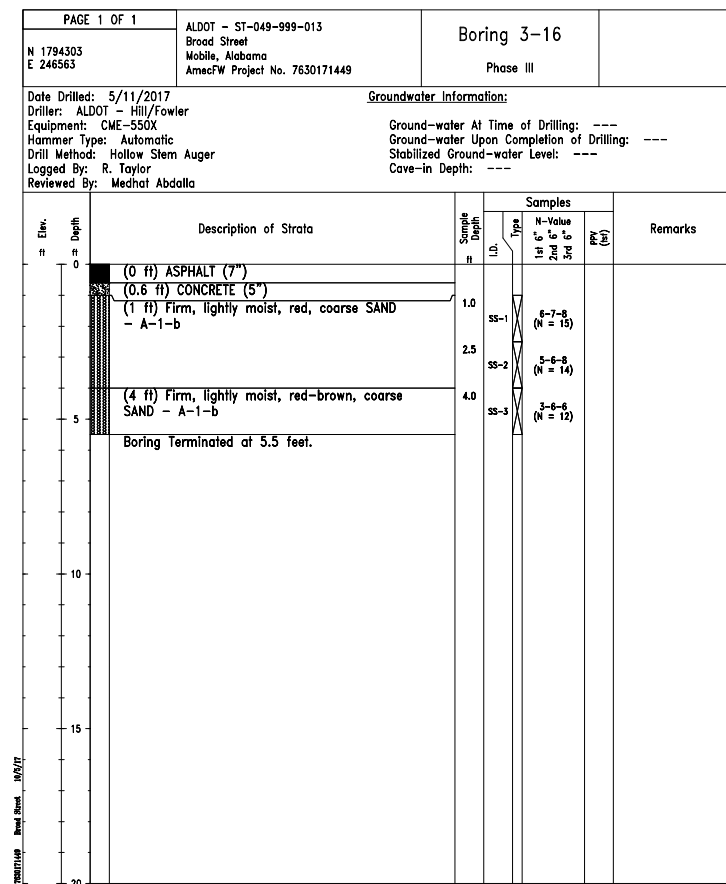
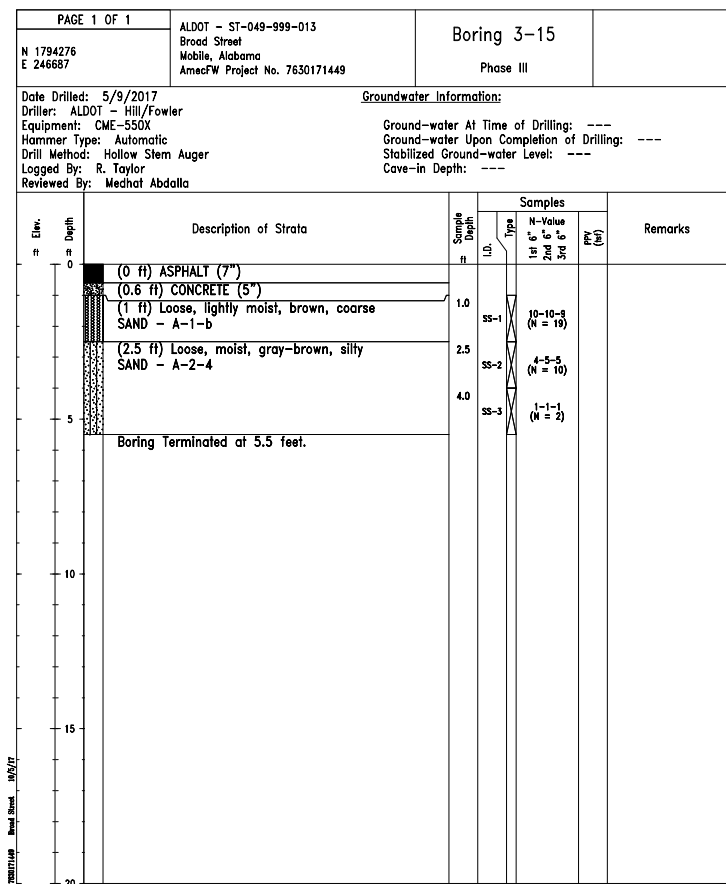
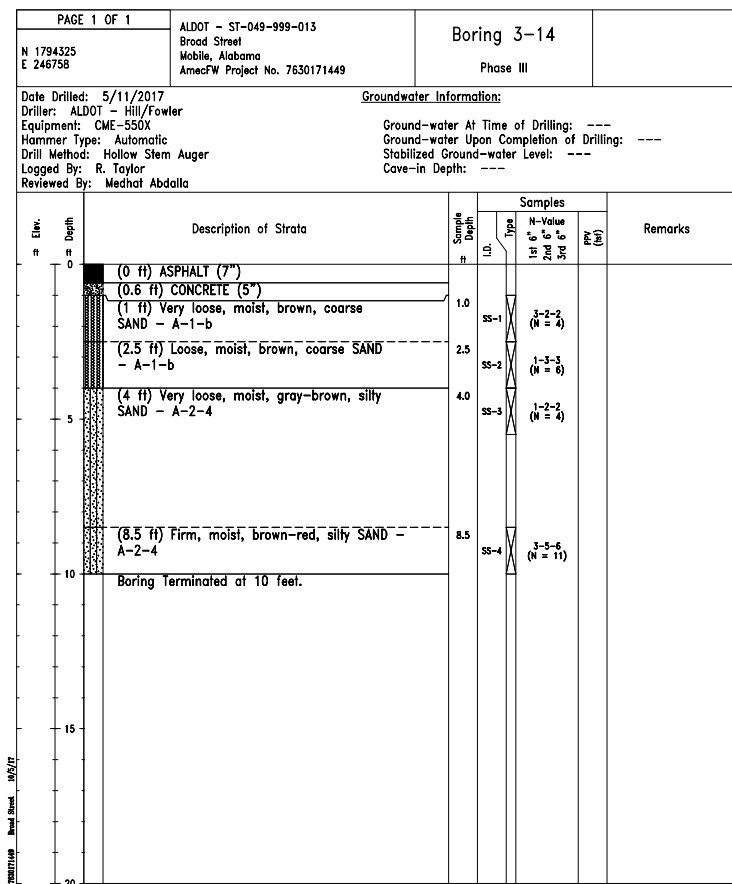
Alabama Department of Transportation	
BORING LOG SHEET ___ OF ___	
 Amec Foster Wheeler, Inc. 4000 Meadow Lake Drive, Suite 125 Birmingham, Alabama, 35242	PROJECT NO.: ST-049-999-013
	BROAD STREET & BEAUREGARD STREET FROM CANAL STREET TO I-10 PHASE III MOBILE COUNTY MOBILE, ALABAMA
APPROVED:	AMEC FOSTER WHEELER PROJECT NO.: 7630-17-1449
DATE:	ALDOT PROJECT NO.: ST-049-999-013
GEOTECHNICAL ENGINEER	TEST BORING RECORD SHEET 2 OF 10




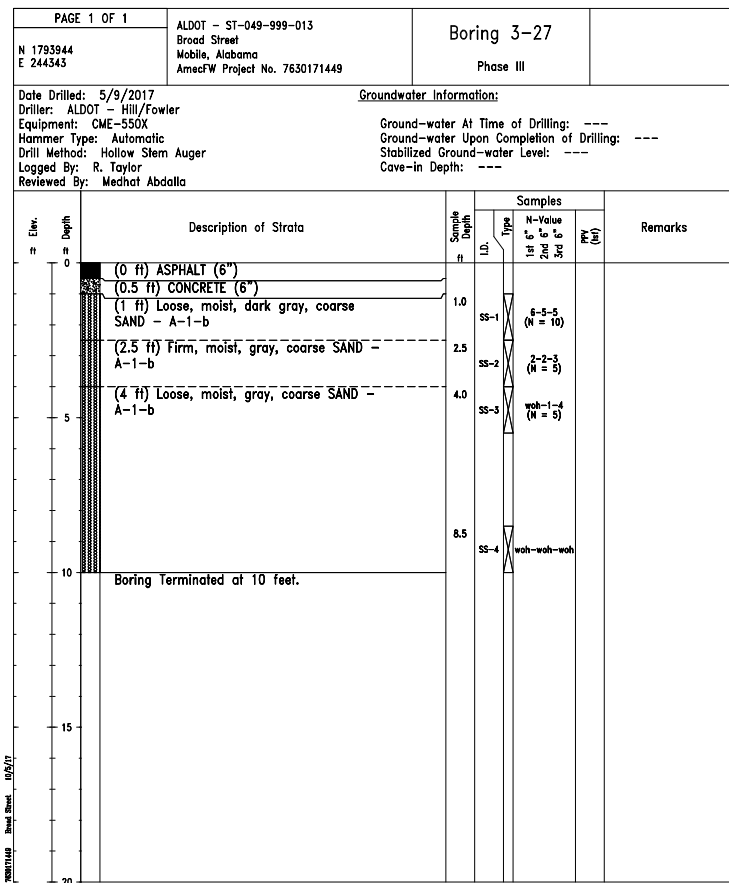
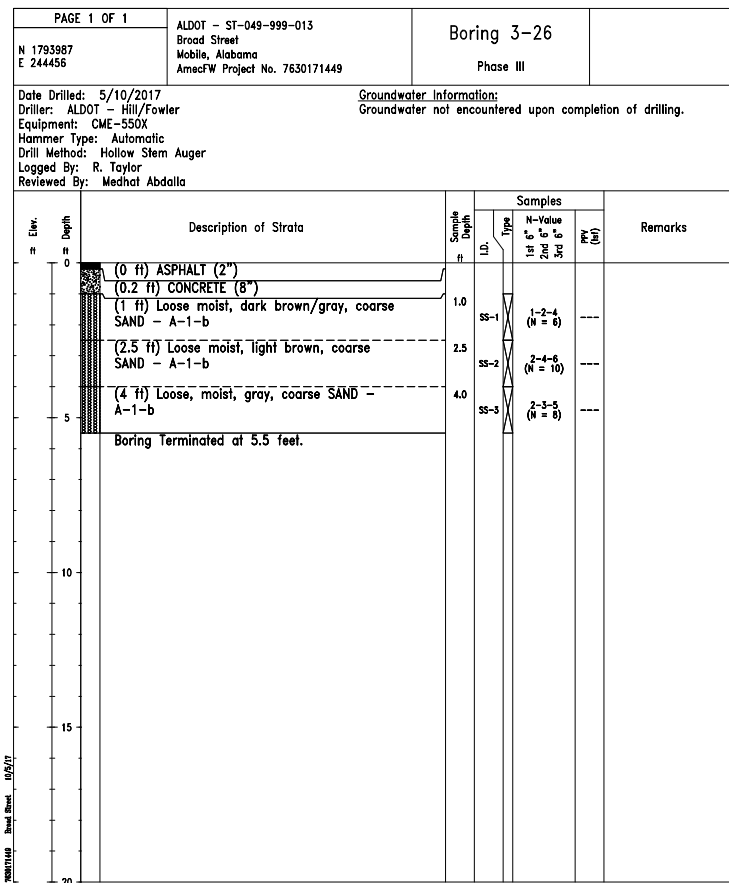
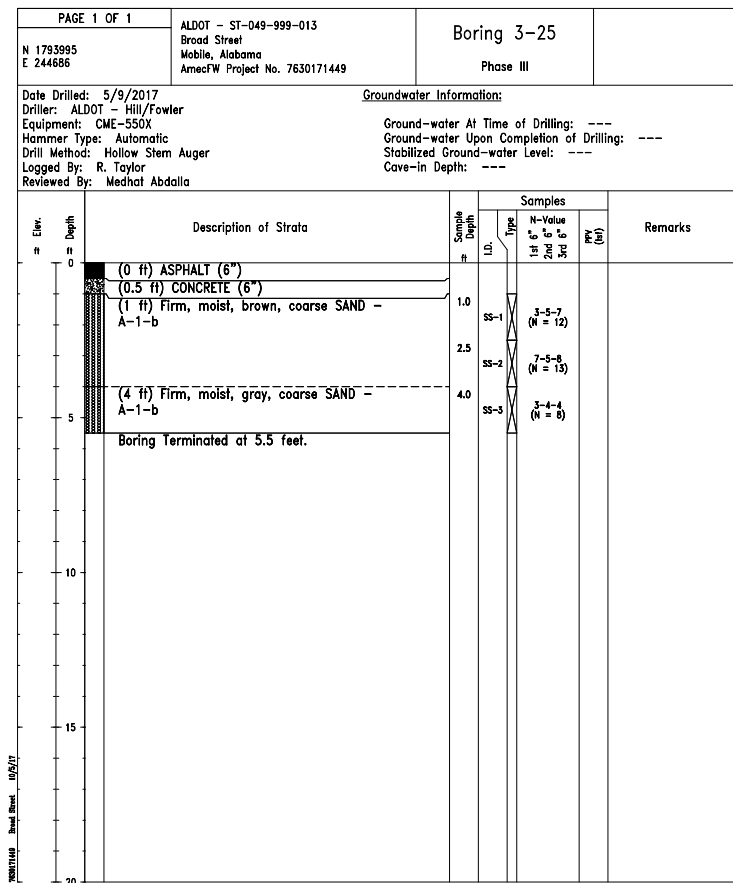
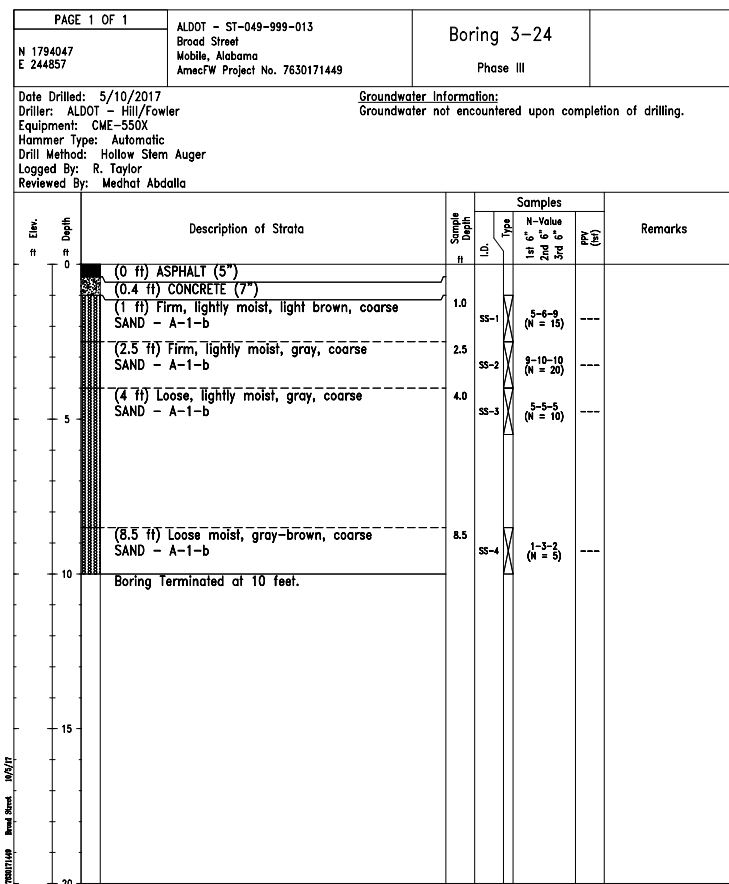
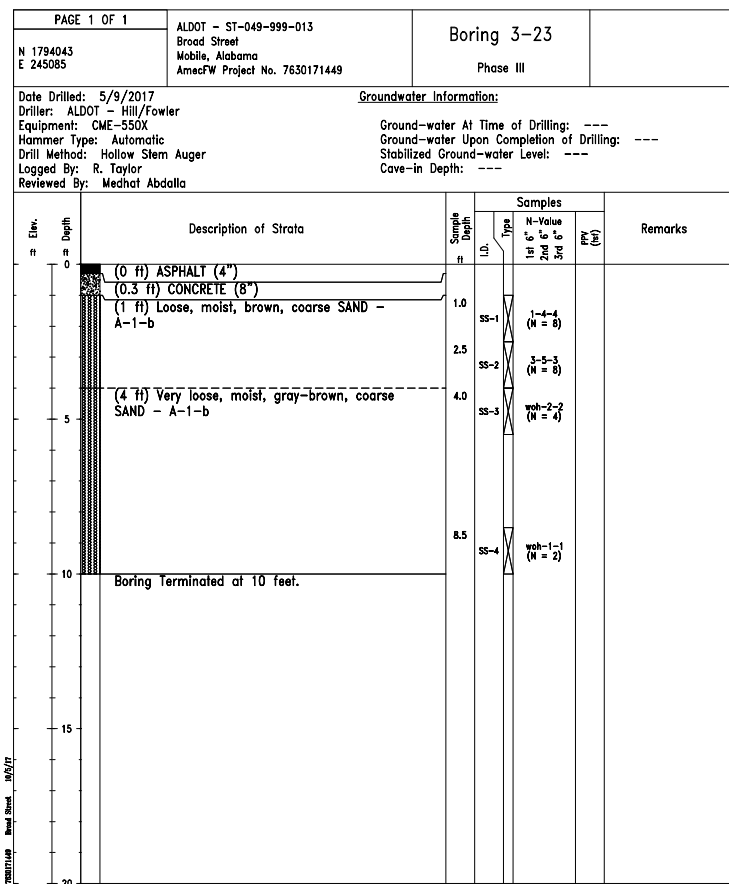
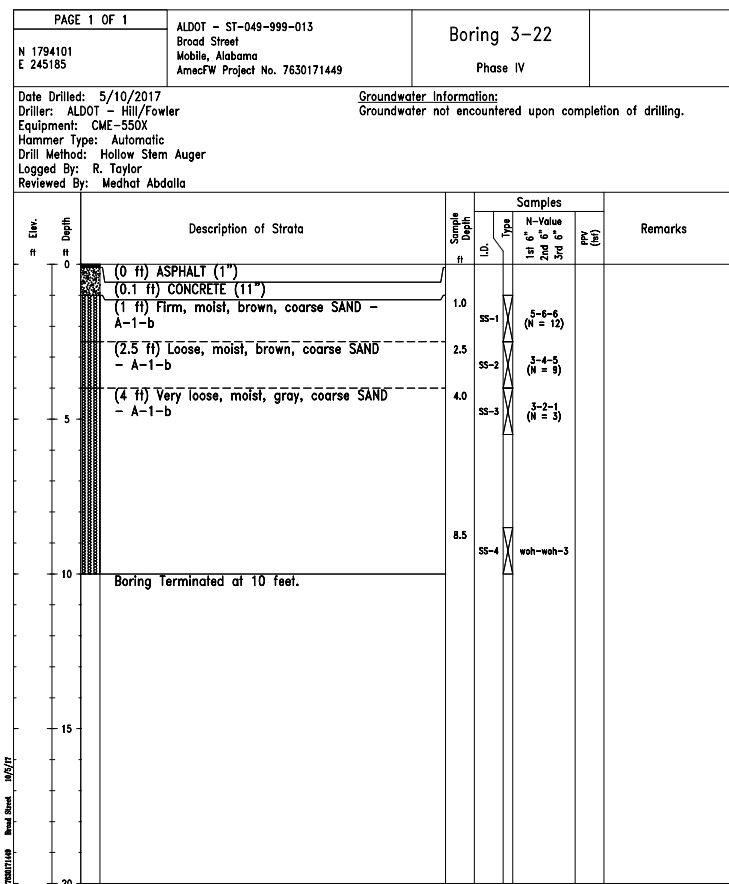
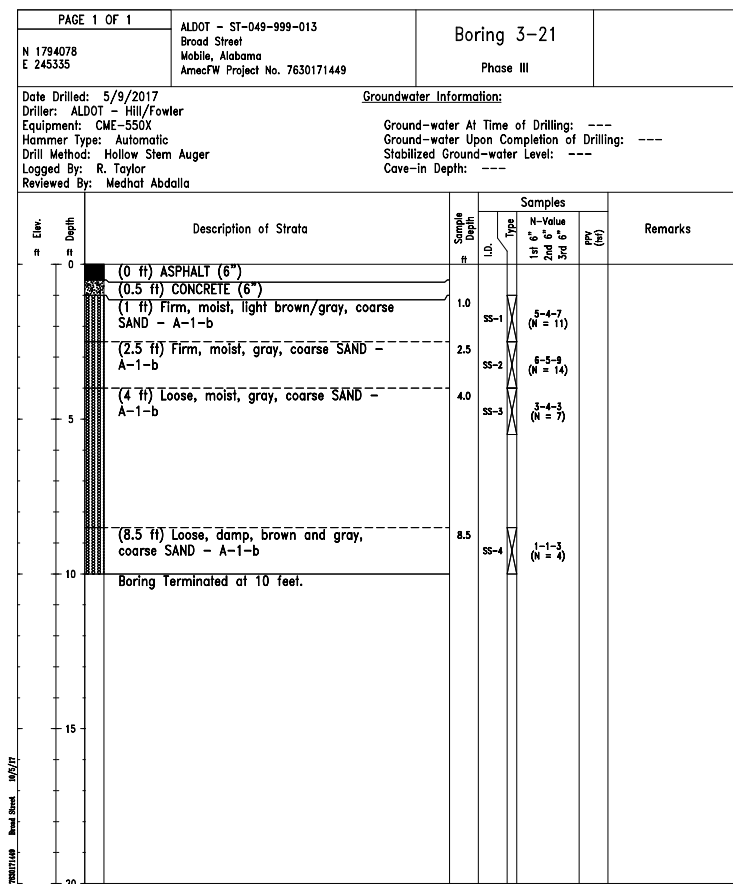
Alabama Department of Transportation	
BORING LOG SHEET ___ OF ___	PROJECT NO.: ST-049-999-013
 amec foster wheeler Amec Foster Wheeler, Inc. 4000 Meadow Lake Drive, Suite 125 Birmingham, Alabama, 35242	BROAD STREET & BEAUREGARD STREET FROM CANAL STREET TO I-10 PHASE III MOBILE COUNTY MOBILE, ALABAMA
	AMEC FOSTER WHEELER PROJECT NO.: 7630-17-1449 ALDOT PROJECT NO.: ST-049-999-013
APPROVED:	TEST BORING RECORD SHEET 3 OF 10
DATE:	




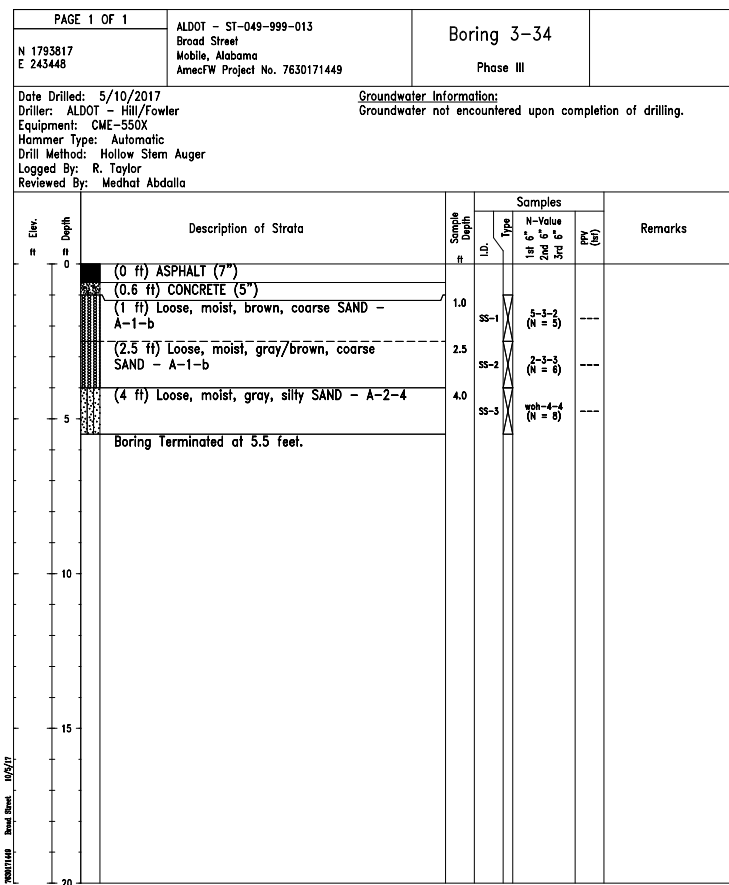
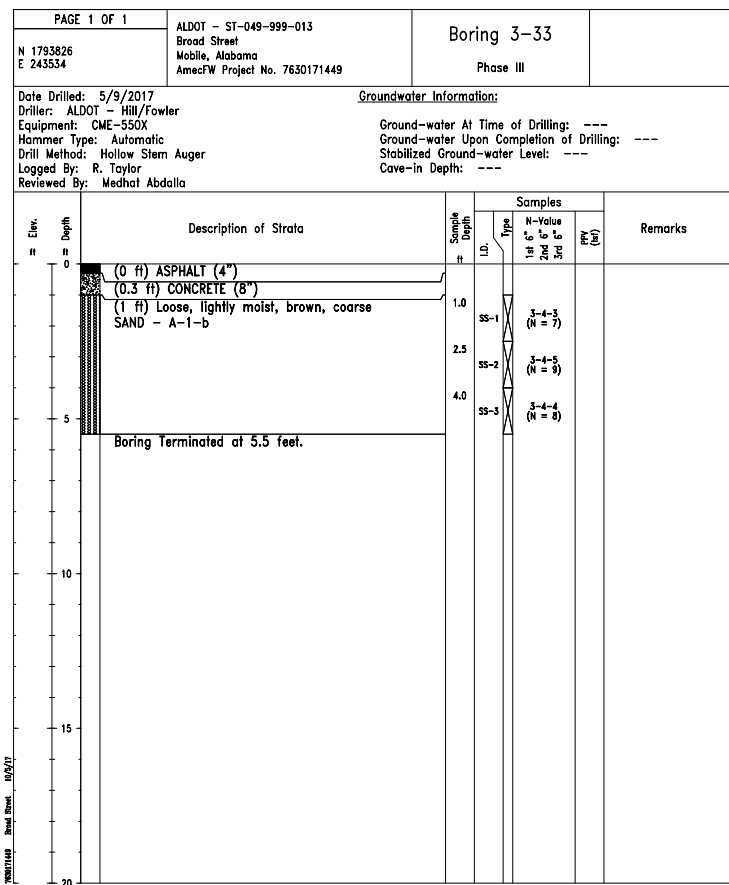
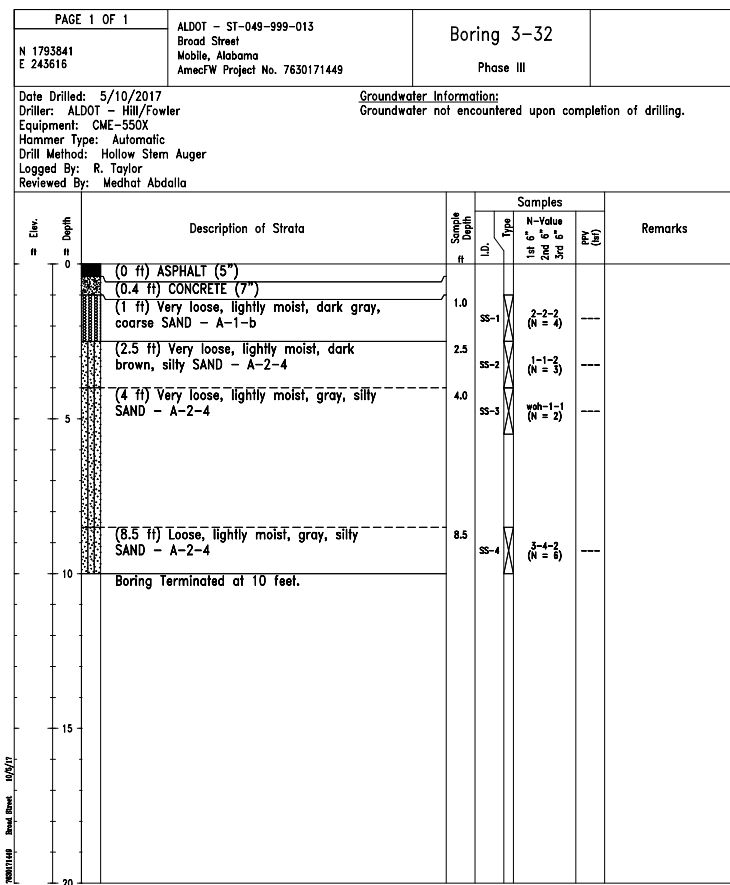
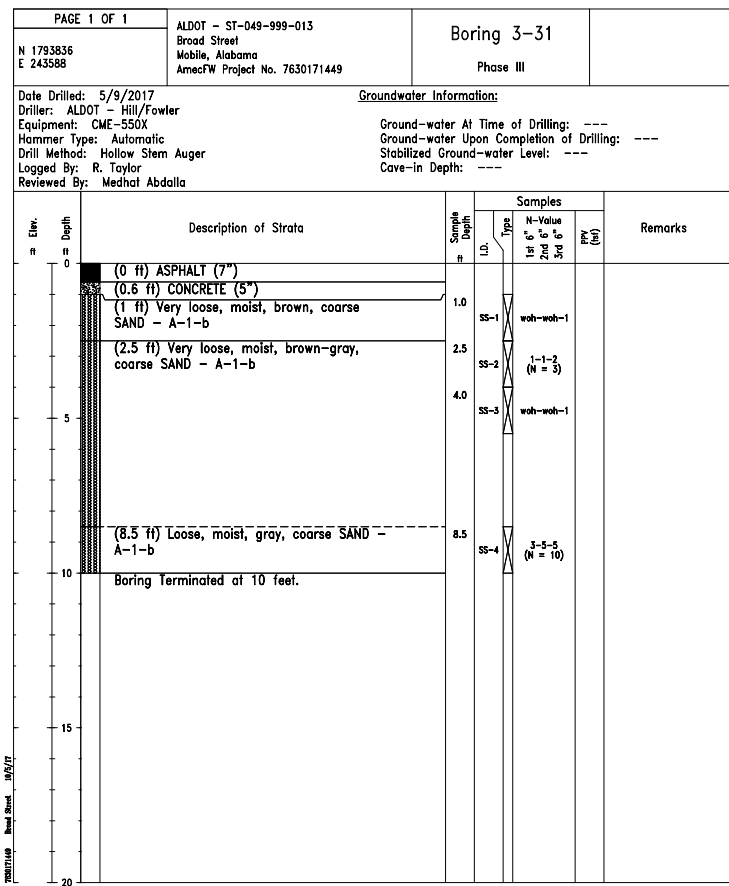
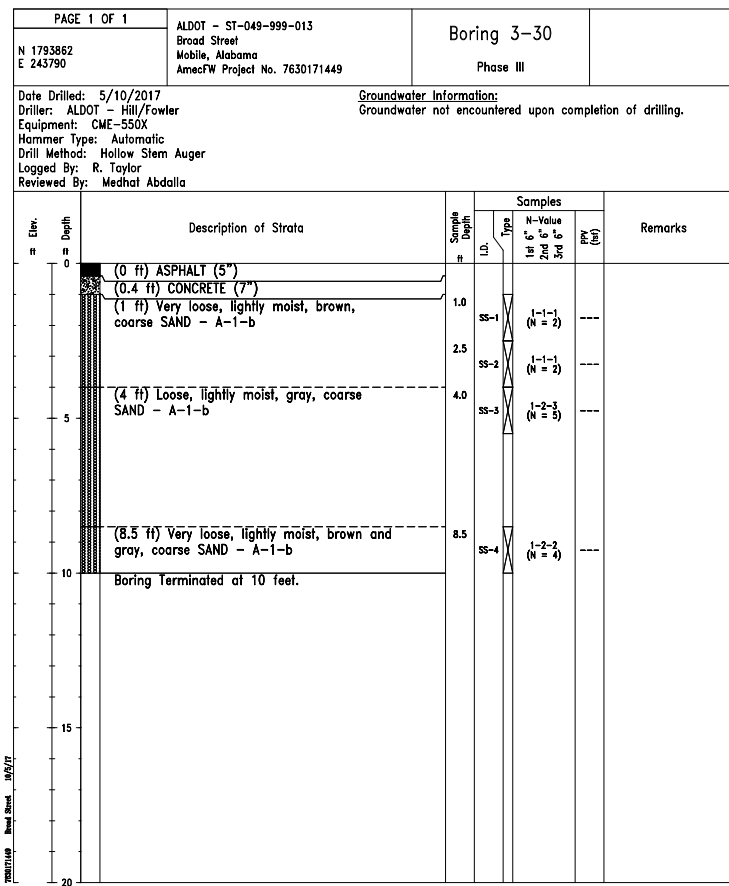
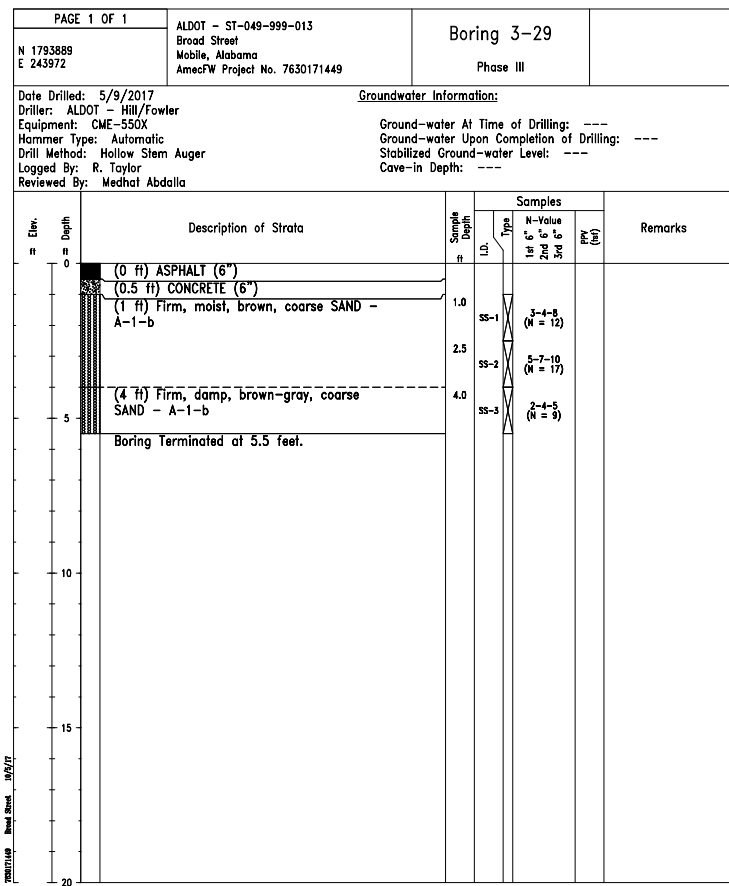
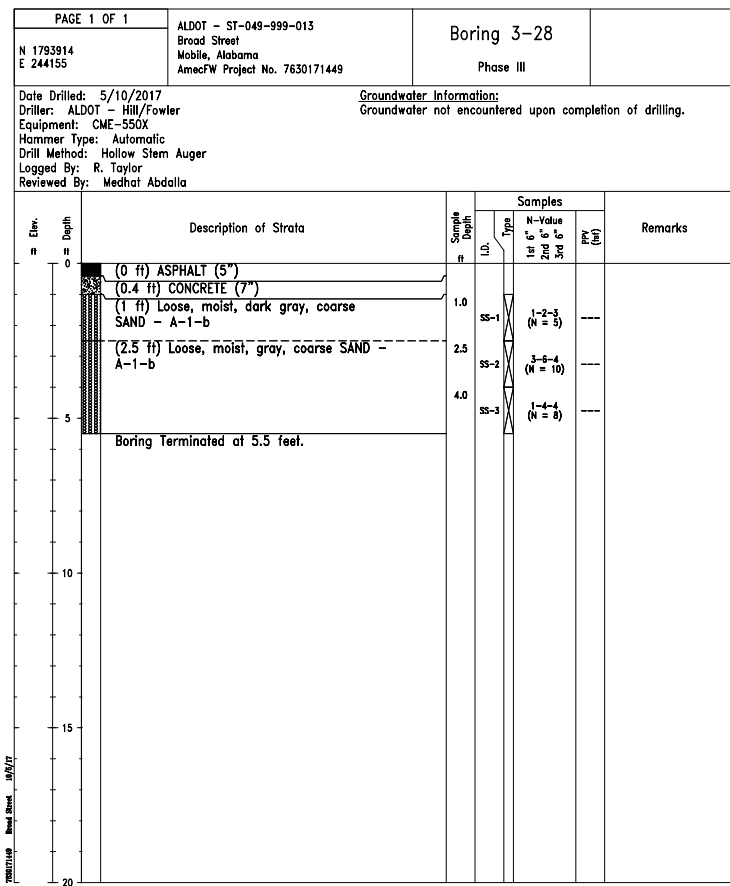
Alabama Department of Transportation	
BORING LOG SHEET ___ OF ___	PROJECT NO.: ST-049-999-013
 Amec Foster Wheeler, Inc. 4000 Meadow Lake Drive, Suite 125 Birmingham, Alabama, 35242	BROAD STREET & BEAUREGARD STREET FROM CANAL STREET TO I-10 PHASE III MOBILE COUNTY MOBILE, ALABAMA
	AMEC FOSTER WHEELER PROJECT NO.: 7630-17-1449
APPROVED:	ALDOT PROJECT NO.: ST-049-999-013
GEOTECHNICAL ENGINEER	TEST BORING RECORD
DATE:	SHEET 4 OF 10




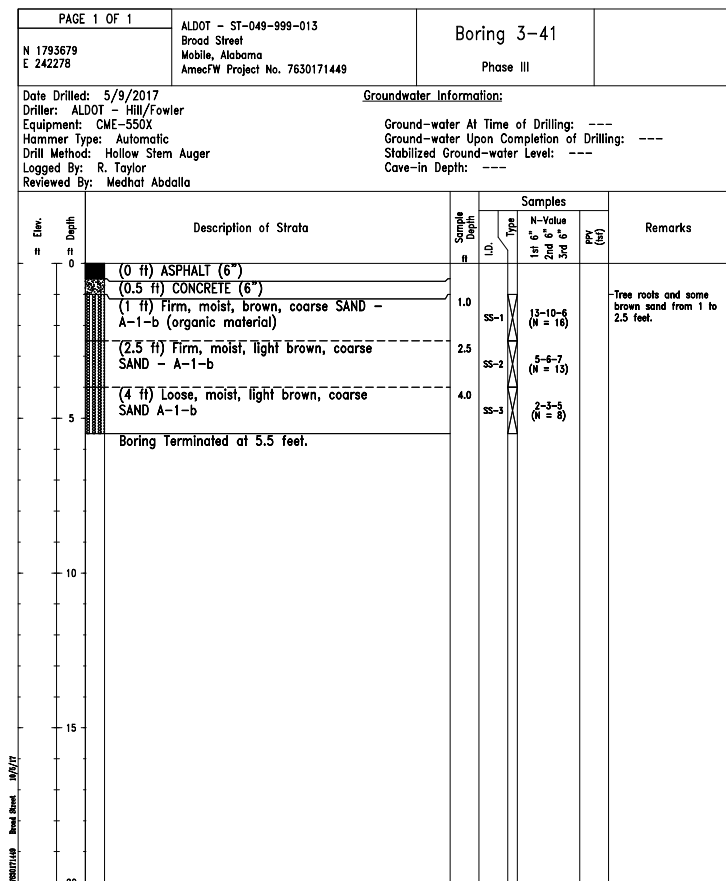
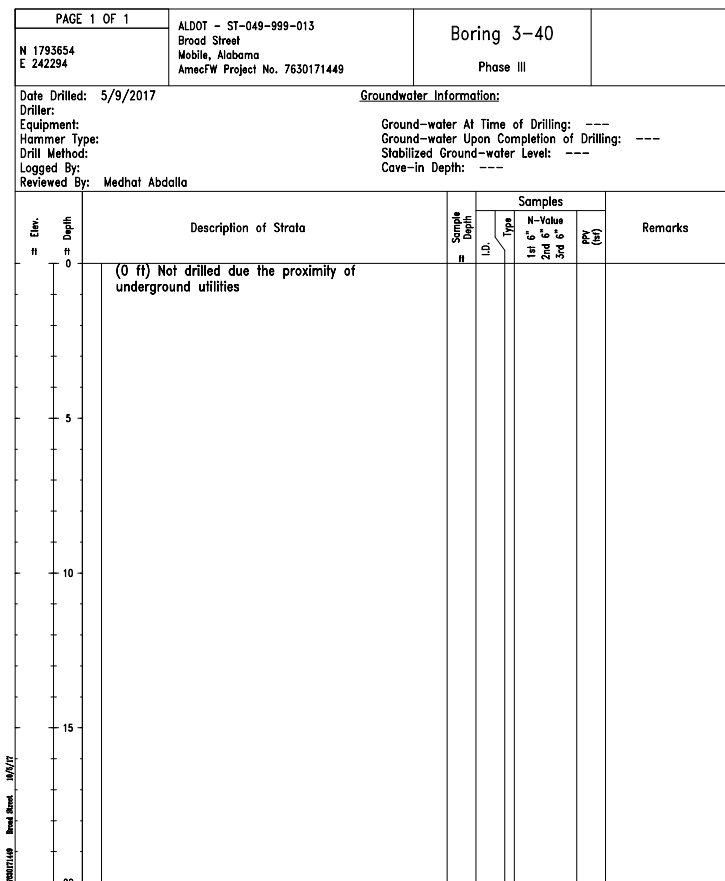
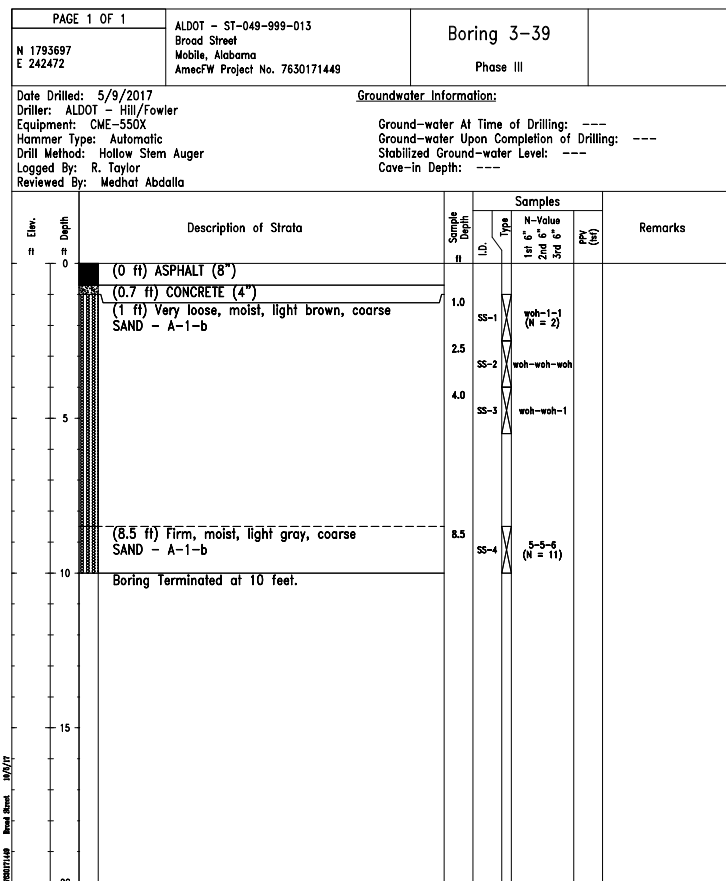
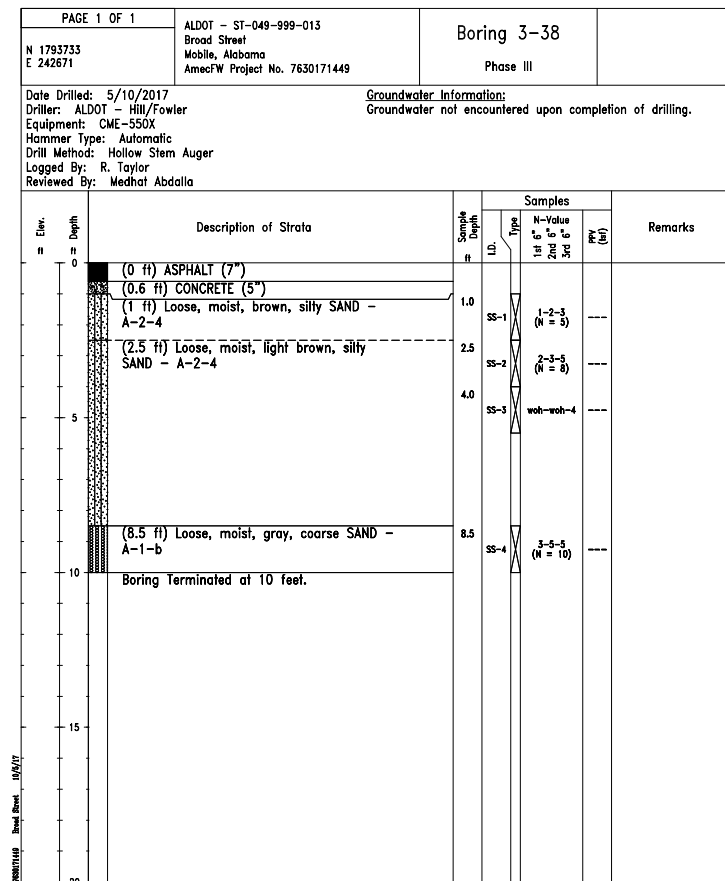
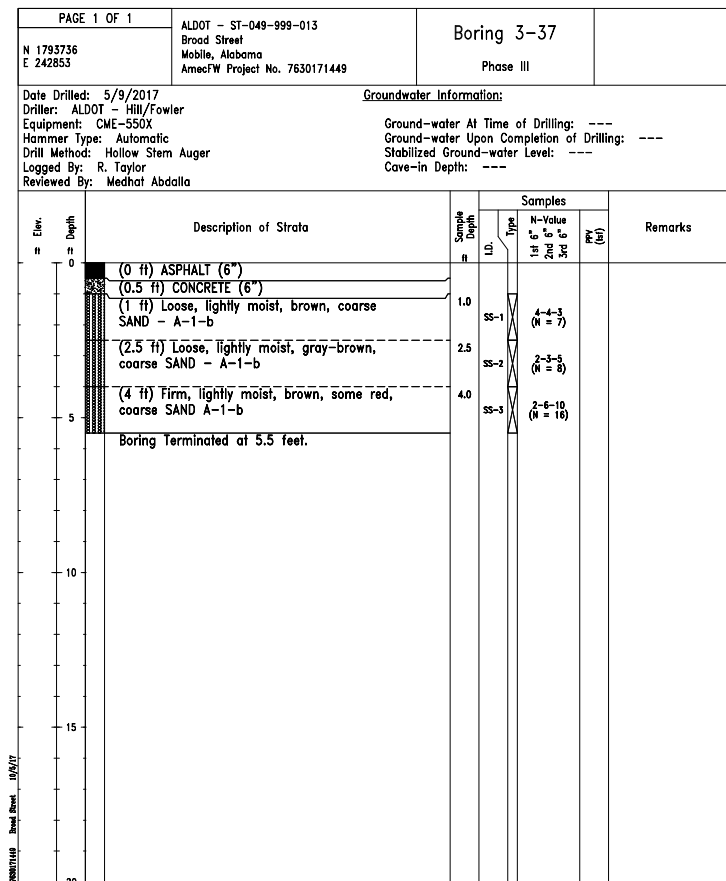
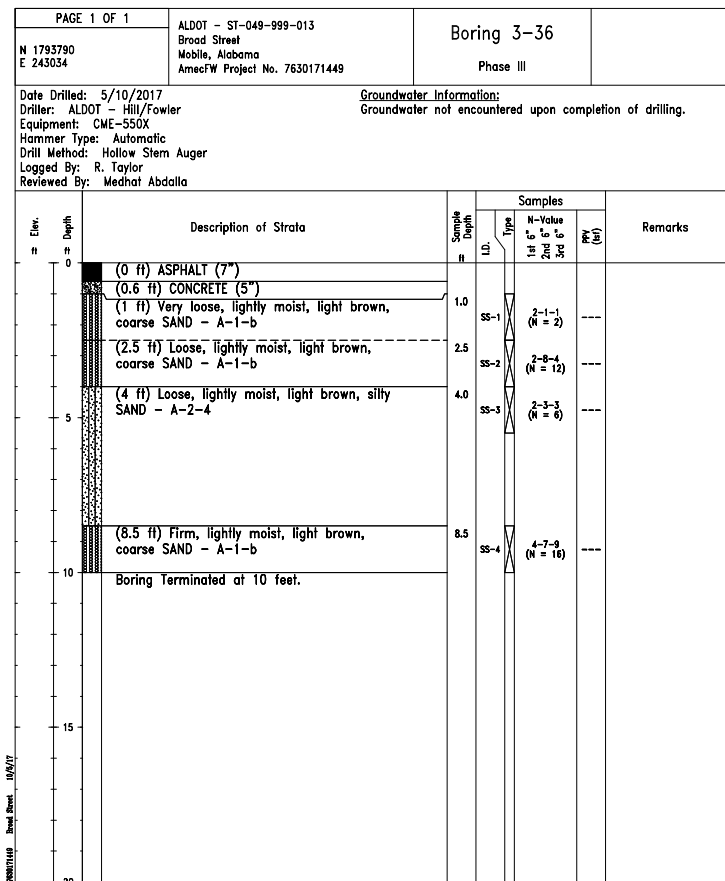
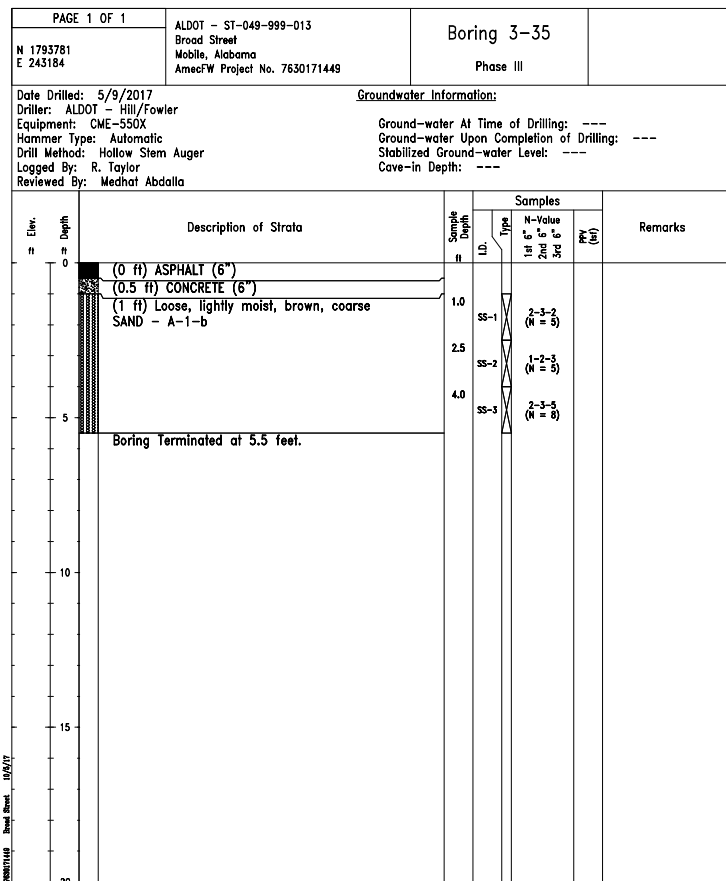
Alabama Department of Transportation	
BORING LOG SHEET ___ OF ___	PROJECT NO.: ST-049-999-013
 Amec Foster Wheeler Amec Foster Wheeler, Inc. 4000 Meadow Lake Drive, Suite 125 Birmingham, Alabama, 35242	BROAD STREET & BEAUREGARD STREET FROM CANAL STREET TO I-10 PHASE III MOBILE COUNTY MOBILE, ALABAMA
	APPROVED:
DATE:	ALDOT PROJECT NO.: ST-049-999-013
GEOTECHNICAL ENGINEER	TEST BORING RECORD
	SHEET 5 OF 10




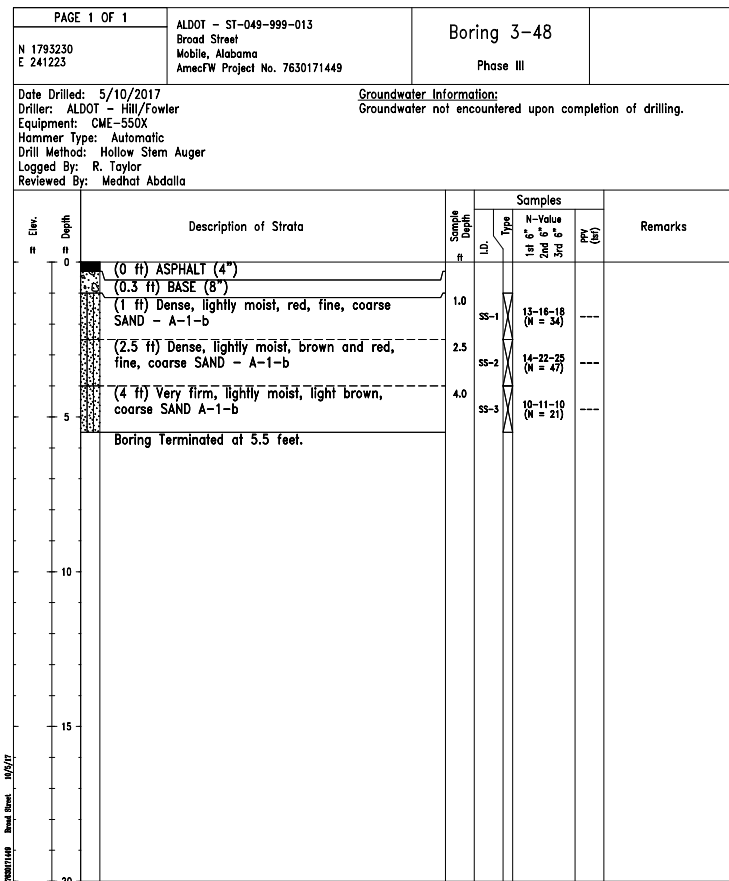
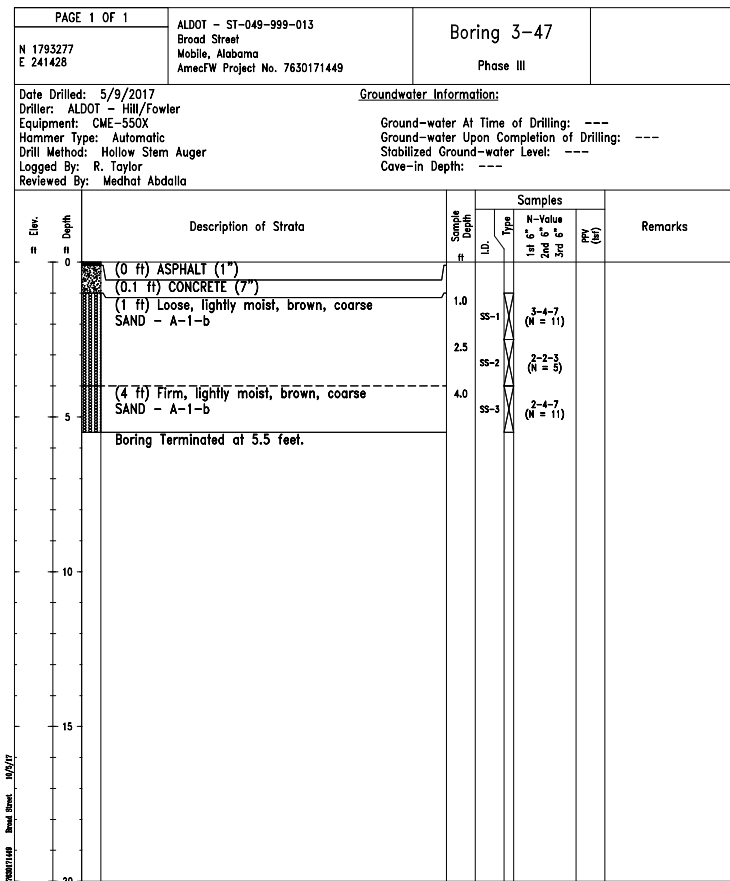
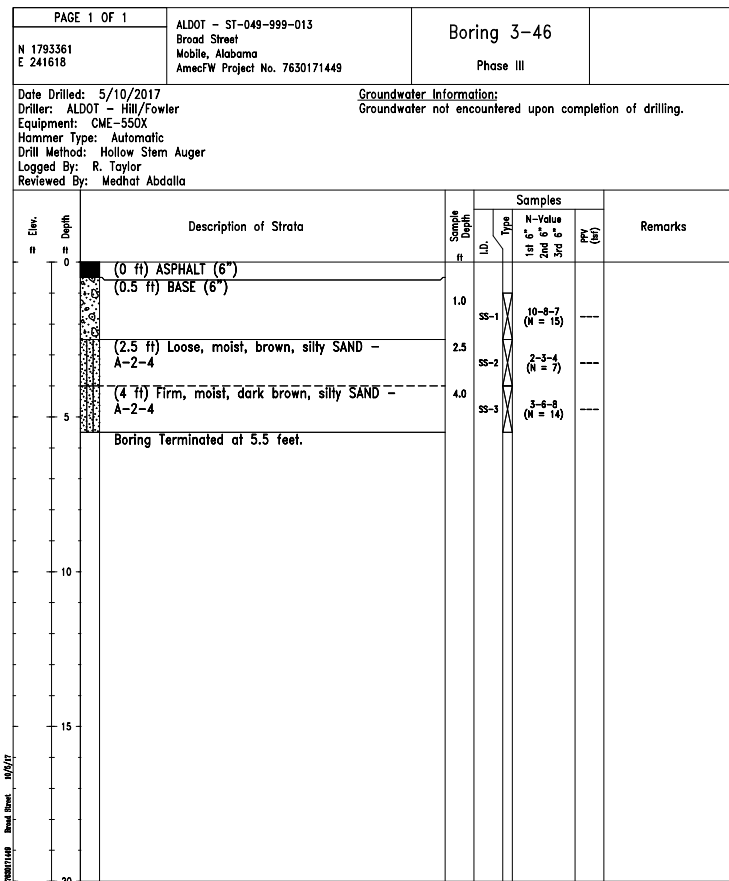
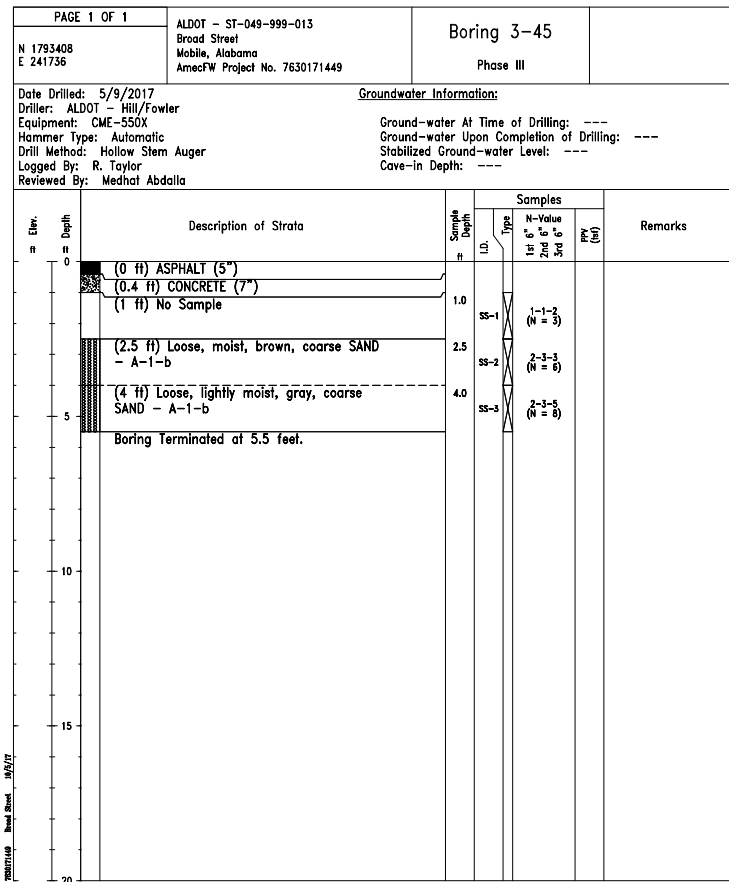
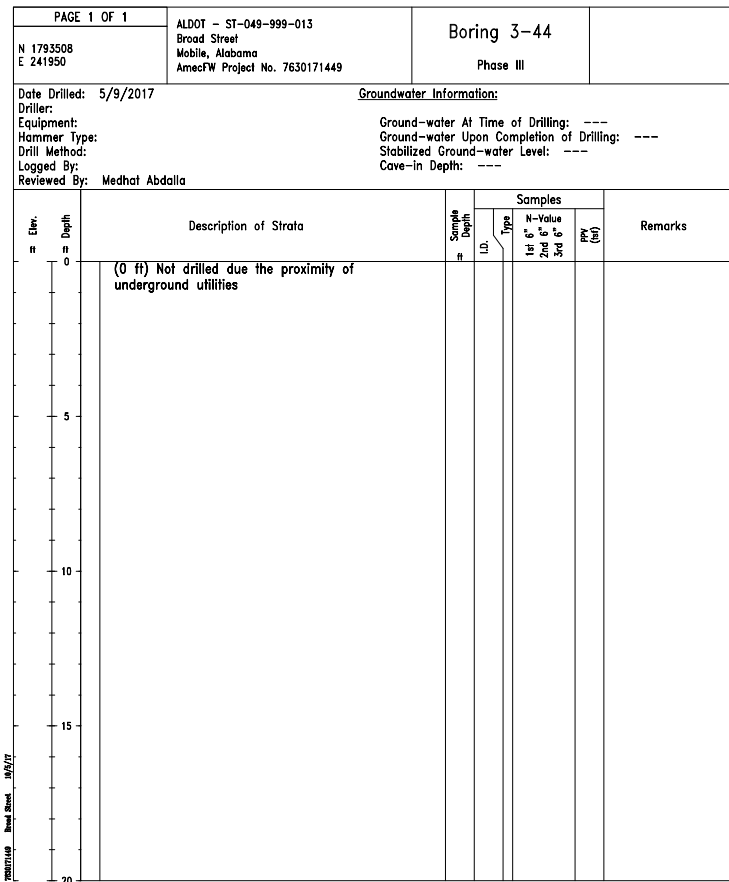
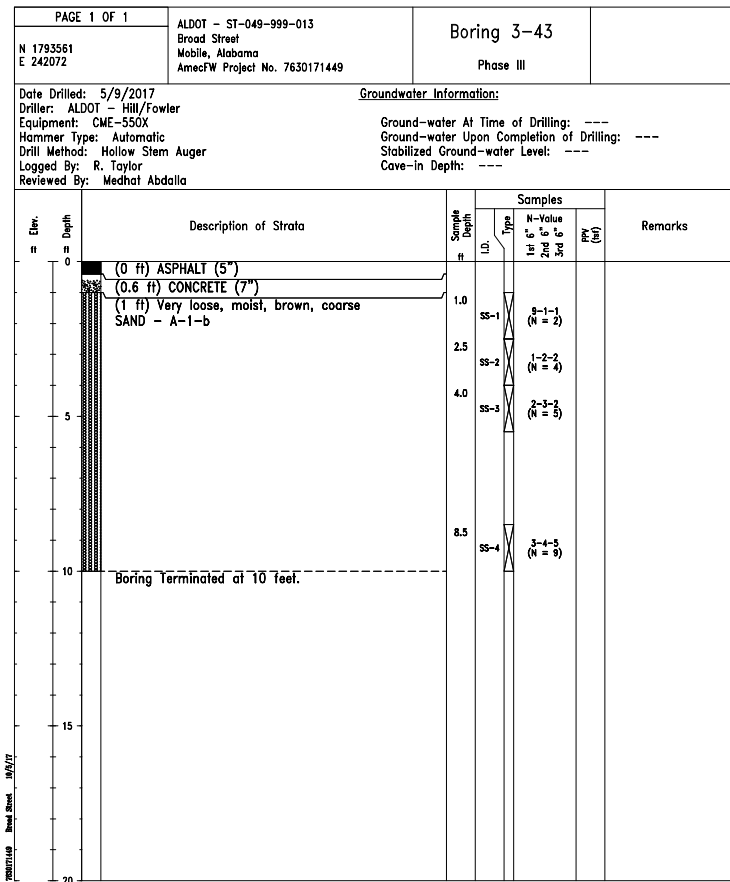
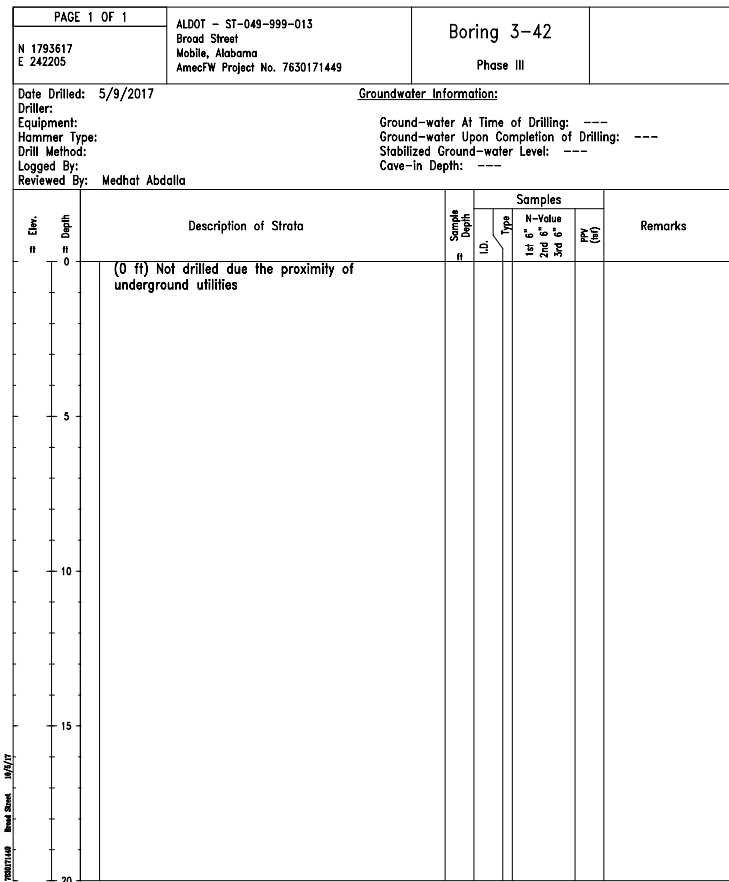
Alabama Department of Transportation	
BORING LOG SHEET ___ OF ___	
 Amec Foster Wheeler Amec Foster Wheeler, Inc. 4000 Meadow Lake Drive, Suite 125 Birmingham, Alabama, 35242	PROJECT NO.: ST-049-999-013
	BROAD STREET & BEAUREGARD STREET FROM CANAL STREET TO I-10 PHASE III MOBILE COUNTY MOBILE, ALABAMA
APPROVED:	AMEC FOSTER WHEELER PROJECT NO.: 7630-17-1449
GEOTECHNICAL ENGINEER	ALDOT PROJECT NO.: ST-049-999-013
DATE:	TEST BORING RECORD SHEET 6 OF 10




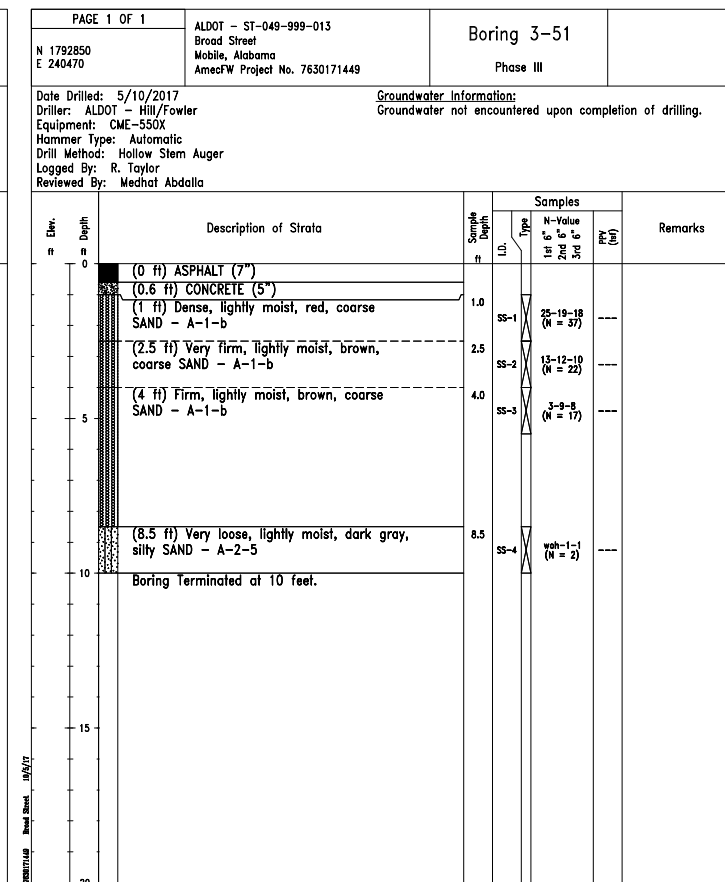
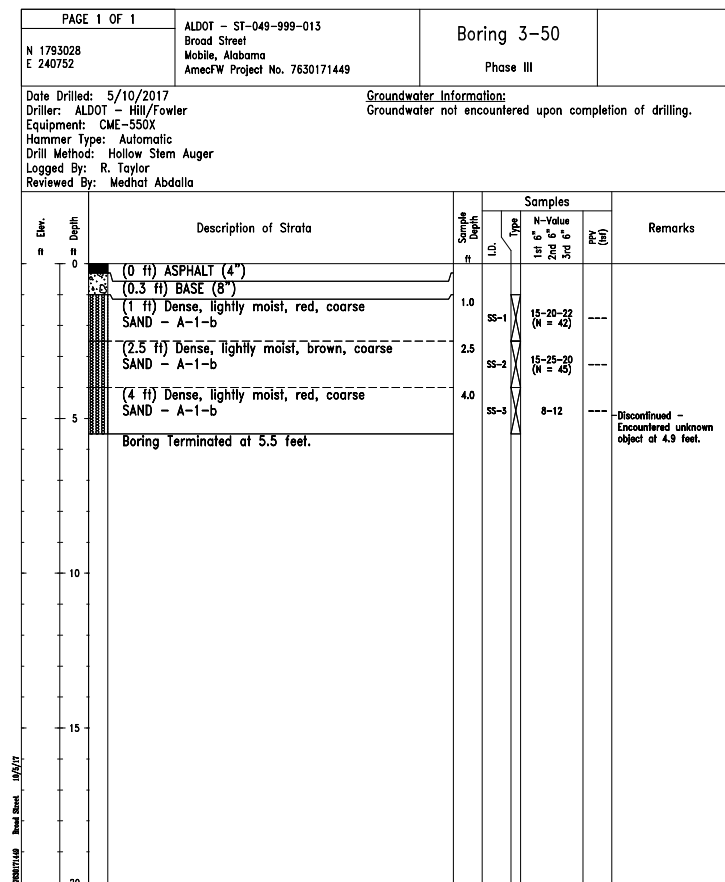
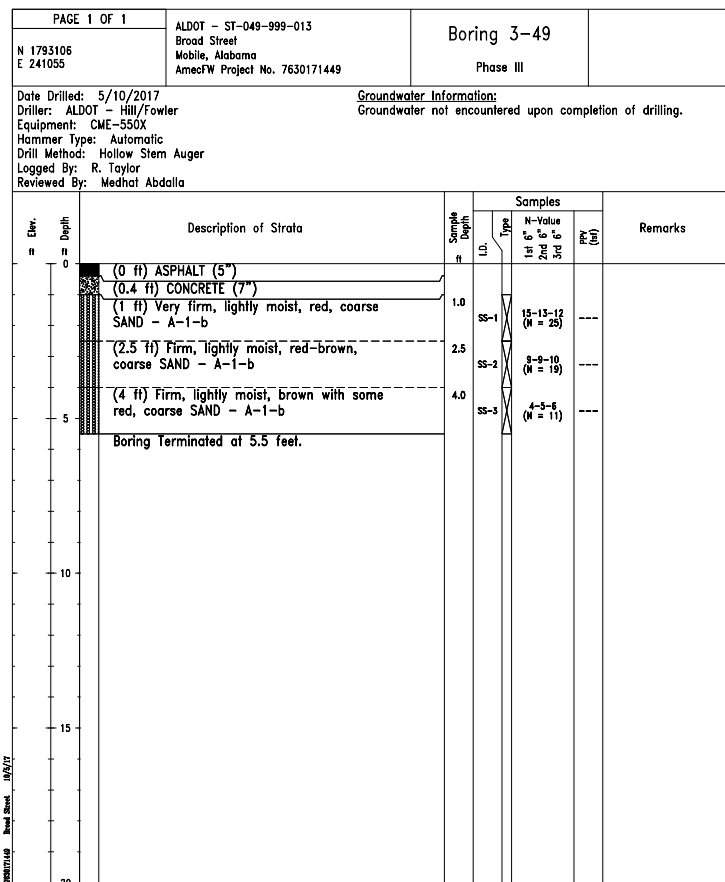
Alabama Department of Transportation	
BORING LOG SHEET ___ OF ___	
 Amec Foster Wheeler Amec Foster Wheeler, Inc. 4000 Meadow Lake Drive, Suite 125 Birmingham, Alabama, 35242	PROJECT NO.: ST-049-999-013
	BROAD STREET & BEAUREGARD STREET FROM CANAL STREET TO I-10 PHASE III MOBILE COUNTY MOBILE, ALABAMA
APPROVED:	AMEC FOSTER WHEELER PROJECT NO.: 7630-17-1449
GEOTECHNICAL ENGINEER	ALDOT PROJECT NO.: ST-049-999-013
DATE:	TEST BORING RECORD SHEET 7 OF 10




Alabama Department of Transportation	
BORING LOG SHEET ___ OF ___	PROJECT NO.: ST-049-999-013
 Amec Foster Wheeler Amec Foster Wheeler, Inc. 4000 Meadow Lake Drive, Suite 125 Birmingham, Alabama, 35242	BROAD STREET & BEAUREGARD STREET FROM CANAL STREET TO I-10 PHASE III MOBILE COUNTY MOBILE, ALABAMA
	AMEC FOSTER WHEELER PROJECT NO.: 7630-17-1449
APPROVED:	ALDOT PROJECT NO.: ST-049-999-013
DATE:	TEST BORING RECORD SHEET 8 OF 10



Alabama Department of Transportation	
BORING LOG SHEET ___ OF ___	PROJECT NO.: ST-049-999-013
 Amec Foster Wheeler Amec Foster Wheeler, Inc. 4000 Meadow Lake Drive, Suite 125 Birmingham, Alabama, 35242	BROAD STREET & BEAUREGARD STREET FROM CANAL STREET TO I-10 PHASE III MOBILE COUNTY MOBILE, ALABAMA
	AMEC FOSTER WHEELER PROJECT NO.: 7630-17-1449
APPROVED:	ALDOT PROJECT NO.: ST-049-999-013
DATE:	TEST BORING RECORD SHEET 9 OF 10



Alabama Department of Transportation	
BORING LOG SHEET ___ OF ___	PROJECT NO.: ST-049-999-013
 Amec Foster Wheeler, Inc. 4000 Meadow Lake Drive, Suite 125 Birmingham, Alabama, 35242	BROAD STREET & BEAUREGARD STREET FROM CANAL STREET TO I-10 PHASE III MOBILE COUNTY MOBILE, ALABAMA
	APPROVED: _____ GEOTECHNICAL ENGINEER DATE: _____
TEST BORING RECORD SHEET 10 OF 10	